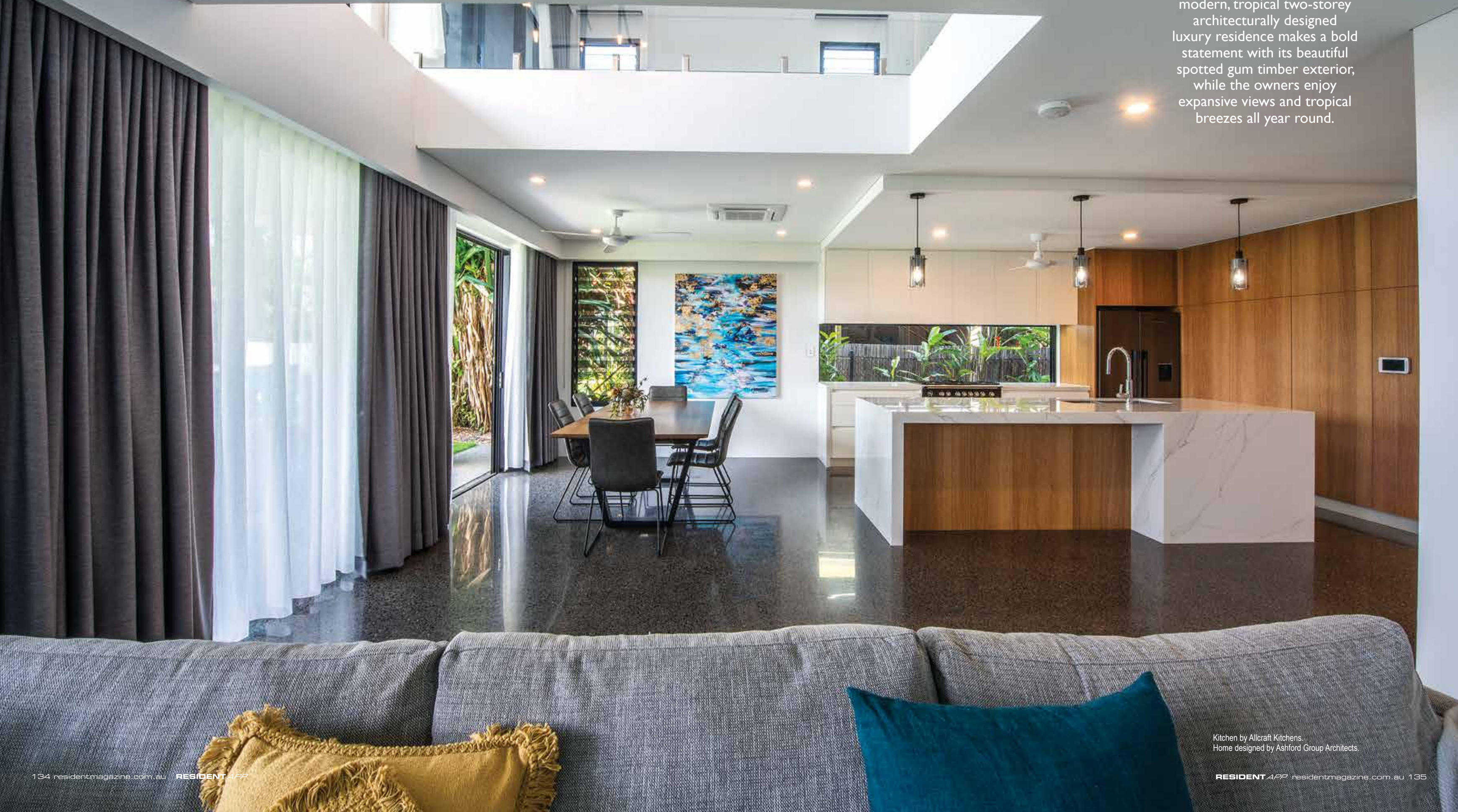


# BOLD & BEAUTIFUL

PHOTOGRAPHY MARK AND TIM WORDS NANNETTE HOLLIDAY

Perched high in Darwin's suburb of Bayview, this newly constructed four-bedroom, modern, tropical two-storey architecturally designed luxury residence makes a bold statement with its beautiful spotted gum timber exterior, while the owners enjoy expansive views and tropical breezes all year round.



Kitchen by Allcraft Kitchens.  
Home designed by Ashford Group Architects.



'Building your own home certainly tests your resilience,' said the proud owners. 'We had a library full of dreams and ideas for our perfect home. Seeing these develop and grow like a child as Ashford Group Architects brought our innovation to life made the perseverance all worthwhile. We're so happy with our completed home.'

Like all new homeowners, there was a list of must-haves in the design. These included a playroom/bay, polished concrete floors, a contemporary, functional and stylish kitchen able to stand the test of time, a laundry shoot and natural light. 'We incorporated all this and more within the contemporary design,' Ashford Group Architects Director, Randal Ashford says. The luxury Bayview residence lists four large bedrooms plus a study and an enormous open plan kitchen, living and dining area that opens out to a vast verandah and barbecue area. The expansive family room opens on to a large balcony with views overlooking Charles Darwin National Park. Three massive double-height voids accentuate the height of the home while also providing connections between the levels. Innovative natural materials and high-end finishes are incorporated throughout. The stunning dark, polished concrete floors were laid by Bear Claw Concreting and polished by Bradshaw Concrete

Designs. They contrast dramatically with the Essastone Calacatta benchtops and American oak panels in the Allcraft Cabinet Works kitchen, and Caesarstone Snow topped built-in cupboards and wardrobes and bespoke cabinetry in other rooms. The naked eye is drawn to the crisp, clean lines of the materials used and quality of the finishes. The long island bench in the kitchen is perfect for family and friends to gather around and is enhanced by elegant pendant lights that draw the eye towards the voids. 'The heart of the home is its living spaces. The seamless flow from inside to outside and the connection to the pool has achieved the ideal family and entertaining space,' said the owners. 'Using quality, experienced builders and contractors, such as Quality Plumbing and Building Contractors and Richard Oliver Construction is a must. We're pleased with all the people who worked on our home. They've brought our dreams to life, and we love the results.'

