

# KINGS OF CONCRETE

## ◆ SPECIAL FEATURE ◆

- PRECAST
- SUPPLIERS
- PUMPING
- CONCRETE SURFACES
- CONCRETE PITS
- FORMWORK
- REINFORCEMENT
- CONSULTS
- CONCRETE CUTTING
- CONCRETE TANKS



All Inserts: Robina Community Centre, QLD

For the 9th year in a row James Hardie was recently honoured with the AA Partners of Choice Award for achieving the highest possible rating in both quality and service. James Hardie is a leading international company specialising in the manufacture of fibre cement building products. Over 95% of James Hardie's fibre cement products sold in Australia are Australian made, and as a result of sustained growth, James Hardie is investing more than \$89 million expanding manufacturing operations in Carole Park, Queensland.

Much of the company's growth comes from its premium range of Scyon™ cladding and flooring products. "These innovative products were developed locally, in James Hardie's research and development facility in Rosehill," said Christian Hansen, Marketing Manager for James Hardie. "Innovation is vital to maintaining our pre-eminent position. We invest heavily in research and development, with a special emphasis on product quality and production efficiency."

The company's fibre cement products are used in new residential construction, renovations, manufactured housing and a variety of commercial and industrial applications. "James Hardie is a trusted trade brand with a reputation for product quality and technical expertise," said Christian Hansen. "Fibre Cement is a great building material because it's

durable and resists damage from moisture, rot, fire and termites, and can easily be cut with a circular saw. This suits the frame construction, the dominant way to build in Australia." One of these products, ExoTec® is a commercial façade panel made from 9mm and 12mm compressed fibre cement which makes it impact resistant and low maintenance. Unlike many of the aluminum and timber cladding products, it's non-combustible. A wide variety of designs can be achieved with ExoTec's express joint fixing system and it can be site-painted or pre-finished in almost any colour. The panels come sealed on all sides to minimise expansion and contraction in changing weather. The fixing system can also absorb building movement to reduce the likelihood of cracking.

James Hardie products can be seen enhancing these developments — Robina Community Centre, QLD; Putney Hill, Sydney; New Terminal 4 Melbourne Airport; 888 Collins Street Melbourne – Commercial and Residential Tower.



For more information contact James Hardie Australia Pty Ltd, 10 Colquhoun Street, Rosehill NSW 2142, phone 131 103, website [www.jameshardie.com.au](http://www.jameshardie.com.au)



**Ben Geisker,  
Director of BKH Group**

"In collaboration with Leighton, BKH Group and PERI Australia we were able to develop a system which suited our requirements. With PERI engineering support and site team we were able to successfully deliver a safe and economical solution to complete this unique and challenging structure. We look forward to the next project."

**Quick cycle times and safe working conditions with the help of flexible scaffold PERI UP along with comprehensive edge protection LPS.**



**Formwork  
Scaffolding  
Engineering**

[www.periaus.com.au](http://www.periaus.com.au)

**Building, Construction, Engineering and Architecture Recruitment Specialists**

Call us today on **1300 365 078**

[designandconstruct.com.au](http://designandconstruct.com.au)

**design & construct**

**buildingcareers®**

Established in 2004, recruitment solution specialists Design and Construct have made a name for themselves as being leaders in identifying and sourcing building, construction, engineering and architectural professionals.

Soon to celebrate their 12th anniversary, Design and Construct have built strong relationships with their clients and candidates, and are the first choice when it comes to finding a role across assorted building related industries.

With a personalised approach to recruitment, Design and Construct cater for all levels of employment from tradespeople and labour, to architects, project managers and engineers, offering both contracts and permanent placements.

As members of the Recruitment and Consulting Services Association, the Civil Contractors Federation, Master Builders Association and the Housing Industry Association, Design and Construct have valuable knowledge of the industries that they recruit for. This adds an extra dimension to the service that Design and Construct can offer, as they have a deeper understanding of what is needed within the industry.

It is this knowledge and passion to deliver quality service which keeps their customers returning time and time again. Further setting them apart from their competitors is Design and Construct's 12 month replacement guarantee on all permanent placements made. This has helped foster long term relationships with clients and an astounding 94% of company revenue results from return business.

Using an extensive database, along with relationships with international, national and regional main contractors, surveying practices, construction consultancies, specialist sub contractors and architectural practices, Design and Construct have the resources to find the right roles in the construction, architectural and engineering industries.

Offering unique and tailored solutions, Design and Construct are committed to operating under the highest standard of ethics and confidentiality. As they move into the next phase of their business, they will continue to excel at what they do, recruiting the future of the design and construction industry.

*For more information contact Design and Construct, 2/213 Miller Street, North Sydney NSW 2060, phone 1300 365 078, email [info@designandconstruct.com.au](mailto:info@designandconstruct.com.au), website [www.designandconstruct.com.au](http://www.designandconstruct.com.au)*



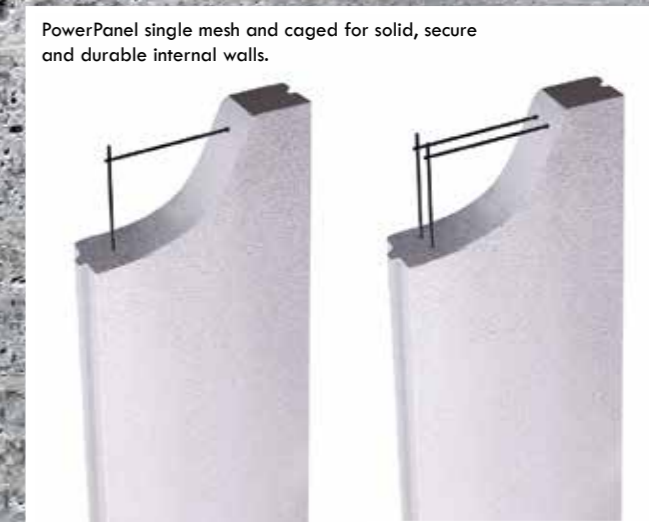
Bunnings Warehouse Kingsgrove Project, NSW Australia



Central Park, Sydney. Hebel intertenancy, corridor and shaft wall systems. Photo courtesy of Frasers Property Australia and Sekisui House Australia.



FRL rating of -/120/120 for PowerPanel stacked horizontally to an unlimited height.



PowerPanel single mesh and caged for solid, secure and durable internal walls.

When it comes to innovative solutions in formwork, International company Doka are at the top of their field. With a rich history that spans 150 years, Doka have had a presence in Australia for the past four years, and are becoming well known for their reliability, trustworthiness and experience.

Providing vertical formwork for walls, columns and lift shafts, and horizontal formwork for slabs, Doka work with their clients to ensure the best possible outcome for a project is achieved.

With a very high emphasis on safety, ease of handling and ergonomic design are among the key characteristics of Doka products. All of Doka's innovative products are manufactured in Austria, in a strict quality controlled environment, and undergo rigorous testing to ensure they are dependable for every project that they are used on.

The efficient way in which Doka formwork can be placed also means cost savings for their clients, as labour costs are cut down significantly.

With streamlined erection and dismantling processes for both vertical and horizontal form work, Doka ensure safety is paramount. Their floor slab formwork can only be installed from floor level, eliminating

fall risk on site, and their vertical formwork systems can be operated with ease by even semi skilled crews.

Customer service is extremely important to Doka, and they ensure that all of their clients receive the "Doka Experience". This entails tours of the facility, presentations, meetings with key staff members and demonstrations of products, along with in depth discussions as to how the best needs of the client can be met.

Doka's formwork is advanced engineering at its best and its design features, along with versatile performance and a low number of system components, means a reduction in overall construction time and costs, making it a favourite amongst those in the construction industry. "Our customers are the centre of our business, and we are 100% committed to working with our customers to achieve the results that they need," Doka's Christian Unger said.

For more information contact Doka Formwork Australia Pty Ltd, 52 Airds Road, Minto NSW 2566, phone 02 8796 0500, fax 02 8796 0549, email australia@doka.com, website www.doka.com

Hebel autoclaved aerated concrete (AAC) is consistently used in intertenancy and corridor walls by many of Australia's most recognised builders and developers including Meriton, Mirvac, Crown Group and Lend Lease. These industry leaders turn to CSR Hebel systems for the extent of benefits they provide including quality value-add, faster installation and risk minimisation.

The ease and simplicity of the Hebel wall systems mean minimal risk points and less opportunity for defects or non-compliance. For instance individual apartments are fire sealed as you go because the Hebel PowerPanel, which extends from slab to close to the soffit, requires only one fire sealant position. Peter Cotton, National Practice Director for Mirvac Design agrees Hebel is a superior system for ensuring simple fire-rating compliance. "The advantage lies in the fact that, in relation to the internal walls, the Hebel product has the fire-rating and is the first thing that goes in. It's sealed and tested on site before we then apply plasterboard," he explained.

Complimenting Hebel's risk minimisation is the speed at which Hebel walls are installed. Delivered to site to specified sizes, the Hebel systems are simple and easy to install to BCA compliance. In an all plasterboard system fire sealing needs to be done on both sides of

the wall using three plasterboard sections – a time-consuming process. With the Hebel systems there's just one fire sealing position and no need for a third section of plasterboard.

Another benefit of using Hebel is that the systems don't require fire-rated GPOs, a factor often unnoticed when looking at the cost and time efficiencies of a wall system. A further benefit with the Hebel system is the ease of service penetration compliance and reduction in rework due to non-compliance.

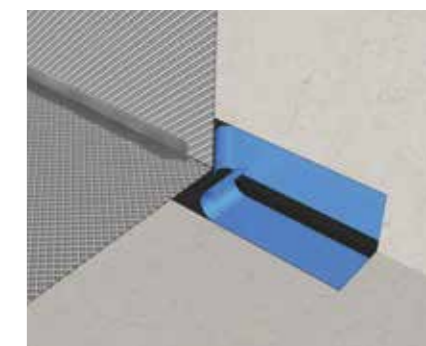
Meriton Apartments, Australia's biggest apartment developer and builder always uses Hebel on its internal party wall projects. In relation to speed, Meriton's Chief Architect, Alan Johnson said "We know we can rely on it going up quickly, which contributes to getting the overall project finished on time."

Quite simply, Hebel intertenancy and corridor wall systems deliver quality value-add, speed and risk minimisation no other systems can match. Very good reasons why leading builders choose Hebel.

For more information contact CSR Hebel, phone 1300 443 235, email info@hebel.com.au, website www.hebel.com.au



# PROOFEX ENGAGE



Innovative anti-tracking, pre-applied waterproofing system for below-ground waterproofing

With over 40 years of experience in all areas of formwork, since 2003 Oneform has produced more than 1,000,000m<sup>2</sup> of formwork for many major projects around Queensland. Their reputation for providing large-scale high quality formwork solutions able to cater for the most complex building designs is unsurpassed. "With our own in-house engineering, drafting, and fabrication team we can customise and cater for the most difficult and intricate formwork requirements, as well as increase productivity onsite," said Paul O'Sullivan.

"Our formwork services include but are not limited to self-climbing ACS-R wall systems, self-climbing jump form systems, self-climbing perimeter screens, material hoists, custom wall and column shutter fabrication, precast panels and all suspended slab requirements. We also specialise in award winning off-form concrete finishes." Oneform's innovation and continual improvement and development of formwork systems and practices by their in-house teams gives them a competitive advantage and provides their customers with the very best advanced formwork solutions. Also having their own steel fabrication department, precast yard and concreting crew ensures they're at the forefront of their field.

Oneform's ability is showcased in the recently completed Advanced Engineering Building (AEB) at the University of Queensland. Winning

nine Australian Institute of Architects Awards in 2014, this building is a state-of-the-art engineering education building incorporating a vast array of off-form coloured concrete, raking and angled soffits and columns with a highly intricate auditorium wall design.

"We've had great success with our custom table forms which, when combined with our own material hoist or forklifts depending on the site requirements, can produce an accelerate production rate without the dependence of a tower crane," added Paul. "Our custom designed and fabricated handrail system which attaches to the table forms can also eliminate the need for perimeter scaffold saving the client both time and money while maintaining the highest levels of onsite safety."

Completely privately owned and operated, Oneform strives to deliver proficient and professional formwork solutions to high-end commercial developments including award winning off-form concrete finishes, self-climbing jump form and screen systems, cantilever slabs and highly intricate and complex formwork designs.

For more information contact Oneform Group Pty Ltd, 396 New Cleveland Road, Tingalpa QLD 4173, phone 07 3890 0249, fax 07 3890 0217, email info@oneform.com.au, website www.oneform.com.au

The Proofex Engage waterproofing system has successfully waterproofed millions of square metres of below-ground structures. It can be found in projects in many countries around the world and is quite simply one of the best performing cost-effective below-ground waterproofing solutions available today. Parchem have introduced the innovative Proofex Engage system, which incorporates a unique cell mesh that mechanically bonds to freshly placed concrete giving a tenacious waterproof seal, preventing water migration even if ground settlement occurs. It is installed rapidly with no need for blinding concrete, priming or protection and can be trafficked immediately after application. It is also gas resistant and highly durable and is unaffected by contaminants within the ground. Quality is assured through BBA and EN13967:2004 and the system is suitable for use in accordance with BS8102:2009 Grades 1, 2 and 3.

#### PROOFEX ENGAGE - SAVES TIME AND MONEY !!!

##### NON WATER-TRACKING

In the unlikely event of damage to the membrane during installation, the smart anti-tracking mesh design of Proofex Engage will prevent water tracking between the membrane and the concrete. Proofex Engage has been tested to ASTM D5383 and shows no lateral water migration when tested at 70m hydrostatic water pressure.

##### STRONG MECHANICAL BOND

The unique mesh design of Proofex Engage gives a permanent tenacious mechanical bond to freshly placed concrete. This bond is not dependent on any chemical reaction and can be assured each time concrete is cast. The heavy-duty mesh design and properties result in a robust, proven membrane which is ideally suitable for project conditions.

##### PERMANENTLY BONDS TO STRUCTURAL CONCRETE

PVC membranes, self-adhesive and torch-on membranes can collapse where ground settlement takes place. This can lead to stretching and tearing of the membrane and can result in leakages. Proofex Engage however, will remain in place fully bonded to the structural concrete assuring complete waterproof integrity even if ground settlement occurs.

##### NO BLINDING CONCRETE REQUIRED

Blinding concrete is preferred, however Proofex Engage can be placed directly on top of a well compacted smooth granular fill substrate. A broadcast of damp sand on top of the granular material is useful.

Removal of the blinding concrete means less concrete and less labour time but also means less concrete truck movements which not only saves time and money but is more environmentally friendly.

##### NO MEMBRANE PROTECTION REQUIRED

Proofex Engage is a robust, heavy duty membrane with millions of square metres in projects throughout the world. The structural steel reinforcement is laid directly on top of the membrane ready for the structural concrete placement. There is no requirement for screed protection which saves valuable time and money.

##### BENEFITS TO OWNERS / DESIGNERS

An ever increasing level of importance is being placed by owners and designers with regards to structural integrity, cost-effectiveness and durability. Parchem recognise this, and Proofex Engage with its proven history, excellent holistic cost benefits and independent certification offers an unparalleled system solution for below-ground structures to combat these demands. It provides owners, clients and designers with a high performance system backed by excellent customer/technical service delivered through a comprehensive international network.

##### BENEFITS TO CONTRACTORS / INSTALLERS

Proofex Engage is designed for typical site conditions. It is heavy duty, robust and can be rapidly installed with easy to apply jointing ancillaries which are system-compatible. The system has a long track record; however Parchem can offer on-site training assistance for specific projects, delivered through teams of local experts. Contact your local Parchem office for more details.

Parchem offers the most comprehensive range of below-ground waterproofing product systems, manufactured to the highest quality standards backed by independent test certificates. Our wealth of experienced technical experts and specification managers will help you find the best system solution for your project.





Regarded as one of the largest providers of formwork solutions in Victoria, I & D Group are committed to delivering high quality projects to ensure their clients' needs are met.

Specialising in formwork and concrete structures, I & D Group use form systems such as table forms, frame systems, scaffold systems, column forms, purpose design and fabricated core wall systems.

With experience to manage a project from start to finish, I & D Group cover all ground works, formwork, reinforcement, post tensioning, precast installation and concrete placement, utilising their specialist concrete crews and professional management team.

Established 22 years ago by owner Ivan Filipovic and his wife Kathy, I & D Group have grown from humble beginnings to now employing hundreds of full time staff. Their passion and commitment to getting the job done safely and economically has been a major factor in their success in the industry, and has seen them grow from strength to strength.

Using the latest frames, tables, screens, pans, scaffolds and equipment, I & D Group are able to complete jobs quickly, efficiently and to a very high standard. Customer service is paramount and the family

owned business has developed a can do reputation, partnering with large scale building and construction companies in both the private and public sectors.

Working closely with their builders, I & D Group work to streamline and refine the build process from the start, and have worked on numerous landmark projects, improving their delivery mechanisms constantly.

Recent projects undertaken include MLS Carpark and Terminal 4 at Tullamarine Airport Melbourne, Werribee Plaza Shopping Centre, Chadstone Shopping Centre, Caulfield Village, and Eporo Tower in Melbourne.

Built on three core principles governing engineering, design and construction, I & D Group continue to open up new horizons for their clients in Melbourne and beyond.

For more information contact I & D Group Pty Ltd, 4/3 Faigh Street, Mulgrave VIC 3170, phone 03 9560 1812, fax 03 9560 1912, email info@id-group.net.au, website www.id-group.net.au

ANCON Beton has provided specialist concrete construction and concrete materials advice to infrastructure and major construction projects since commencing operations in Australia, 1996. "It is exciting that next year ANCON Beton will celebrate 20 years of concrete consultancy services in Australia and the surrounding regions," says Managing Director Ian Burnett.

"Our diverse client base and flexibility to work on projects small and large anywhere in the world continues to challenge and maintains the concrete construction industry as an exciting industry to be involved with," Ian says.

Concrete and construction technology services are provided at all project stages from feasibility and specification advice, trial works inspections, on-site verification and through to defect and forensic investigations. ANCON has a focus on work within Australia, South East Asia and the Middle East. With all consultants having prior experience in either an on-site concrete construction environment or concrete materials technology or supply ANCON is a unique and practical consultancy company and maintains a very 'hands on' approach to assignments.

ANCON operates in the fields of general concrete construction, concrete materials and mix designs, industrial and commercial

pavements and specialist construction with concrete. ANCON provides concrete durability plans and mass concrete thermal analysis.

Typical services ANCON provides include;

- Concrete materials
- Concrete Floor Services (including Super-flat) and internal/external pavement tolerances, joints and detailing
- Floor measurement for free movement and VNA
- Specialised concrete development
- Concrete construction techniques and technology
- Forensic investigations, expert witness services and concrete testing, support and advice
- Management of concrete production, compliance and products
- Supervision and asset management advice for concrete structures
- Concrete and construction specification development
- Concrete plant audits and operations support and advice
- Concept design and commissioning of aggregate crushing circuits and concrete plants

For more information contact ANCON Beton, Level 1, 66 Rundle Street, Kent Town SA 5067, phone 08 8362 4540, email sales@anconbeton.com, website www.anconbeton.com



Specialist in concrete placement and finishing, CPS Concretors pride themselves on completing large projects within tight deadlines and cost restraints whilst meeting the highest standards of safety and workmanship on every job.

The company are currently playing a key role in The Wayfarer Apartments, a high-end, residential building located in Belconnen, Canberra. The Wayfarer will be the tallest residential building in the ACT and aims to be the epitome of first-class inner city living.

“We look after the concrete pours, we make sure everything runs smoothly,” says CPS Director Tony Costanzo. “We are just coming out of the ground at the moment, we have 24 levels to go, and so far so good.”

CPS has been in business for over 30 years. “We are easy to deal with,” Says Tony, an aspect which the company prides itself on. “Whether the job is big or small we come up with concreting solutions. We have a commitment to excellence.”

CPS run a fleet of four mobile concrete boom pumps and three tower placing booms ranging from 28m – 52m. With over 18 employees,

the company has built a strong reputation and have completed many major projects throughout Canberra including;

- Canberra Airport Multi User Terminal
- Canberra Hospital Car Park
- Canberra Region Cancer Centre
- Centenary Hospital for Women and Children

Offering the highest quality concreting expertise, CPS work closely with their clients and provide professional services no matter how big or small a project.



For more information contact CPS Concretors Pty Ltd, Unit 7, 63-65 Wollongong Street, Fyshwick ACT 2609, phone 02 6228 1552, fax 02 6228 1529, email admin@cpsconcretors.com.au, website www.cpsconcretors.com.au

Brokk is the world’s leading manufacturer of remote controlled demolition machines. Since 1976 the company has developed demolition and maintenance solutions for the construction, cement, mining, metal process, tunnel and nuclear industry, as well as a variety of demolition solutions for special assignments and projects worldwide.

Brokk head office is located in Sweden and the products are marketed, sold and serviced through a global network of subsidiaries, distributors and agents.

Brokk brings more demolition power, functional versatility and safe operation to the worksite. This method out performs traditional methods used like hand held concrete sawing and jack hammers. The Brokk’s compact size makes it agile providing easy access to confined spaces.

It will easily climb over debris or up a staircase, due to its light weight compact design it can even be taken floor to floor in an elevator. The three part arm system provides great flexibility and reach, it can also be equipped with a variety of attachments. The Brokk range offers a solution whether it be big or small, our range expands from 500kg to 11 tonne machines.

The Brokk concept is “power in a small package” no matter which model you choose, every Brokk machine has unique characteristics that have made Brokk famous and trusted around the world with 6000 units in operation.

Brokk Australia prides itself on their customer service and the ability to offer 24hour technical support. The team’s knowledge of the machines and industry helps to find the right solution to all customer’s, giving peace of mind that Brokk operates with the best practice measures at the forefront of their business procedures. Safety, efficiency, quality and reliability is what a Brokk Machine provides to customers in both Australia and New Zealand.

Brokk Australia can help lead your business into the 21st century.



For more information Brokk Australia, 9 Colorado Court, Morphett Vale SA 5162, phone 08 8387 7742, fax 08 8387 7743, email info@brokkaustralia.com.au, website www.brokkaustralia.com.au



Diverse Concreting offer a range of premier concreting services throughout Canberra, specialising in Concrete Pump, Place and Finish, as well as Reo Fixing. Established in 2005, Diverse Concreting has a team of over 40 people who take their vast experience in the industry onto each project ensuring high quality workmanship is delivered time after time. Meeting client requirements is of the upmost importance and the concrete specialists have developed close relationships with builders, developers and trades people, ensuring the best possible service is delivered at each and every project.

Working on multiple projects with total ground floor areas over 50,000m<sup>2</sup>, Diverse Concreting deliver all projects on time, on budget and to the standards builders expect, with strict Quality assurance procedures being adhered to on every project. Their expert team has completed work on commercial buildings, warehouses, laboratory buildings and clinics, hospitals, manufacturing facilities and factories. A site manager is assigned to each project to organise and delegate tasks on a day to day basis, and correspondence is looked after by the operations managers. This division of tasks allows for the client to have a constant point of contact guaranteeing all trades are coordinated and that the client is essentially able to continue on with project tasks as efficiently and smoothly as possible from conception through to closeout. Building

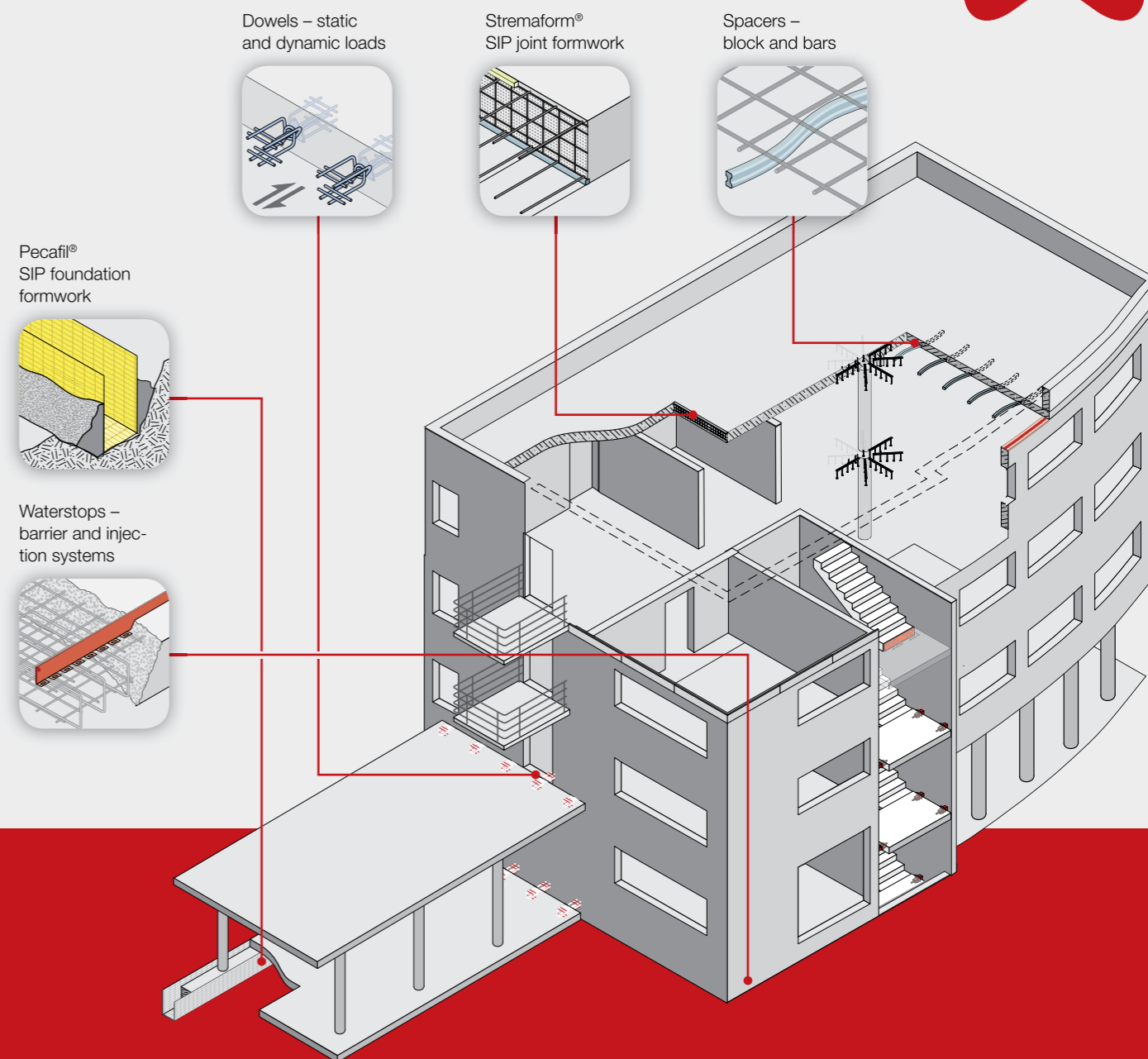
a high level of trust and integrity into all client relationships, Diverse Concreting truly value their role in the success of their client's projects.

Diverse Concreting also has its own plant, including mobile and tower pumps which allow for ease of organisation from the Principal's perspective. In conjunction with the pump, place and finish aspects of its business, Diverse have added a reo-fixing operation to its arsenal, with an experienced staff base that is currently working on multiple sites of varying size. Bringing these key trades together allows for seamless integration through the structure phase of any project.

Currently Diverse Concreting are working on the Tuggeranong Office Project, the Trilogy Apartments, Wayfarer Belconnen, the Prince project at Kingston foreshore, as well as the Greenwich and St. Germain projects in the new Campbell's Development. Their professional, friendly and excellent customised service makes Diverse Concreting a concrete pump, place and finish, as well as reo-fix service provider of choice in the Canberra region and beyond.

For more information contact Diverse Concreting, 2/72 Townshend Street, Phillip ACT 2606, phone 0404 152 152 or 0406 168 894, email info@diverseconcreting.com.au, website www.diverseconcreting.com.au

TECHNOLOGIES FOR THE CONSTRUCTION INDUSTRY



Find many more in our product range!

**Spacers**

A range of quality durable spacers compliant with AS/NZS2425

**Formwork**

A range of versatile Stay in Place (SIP) formwork

**Reinforcement**

Connection systems for working and expansion joints

**Sealing**

Waterstops (coated metal, pvc, injection hose, expanding and non-expanding) for all situations

**Building Acoustics**

Dowels, spacers and bearing pads to reduce sound transmission

Max Frank Australia Pty. Ltd.

1/42 Balaclava Street | Woolloongabba QLD 4102 | Australia | Phone: 1300 853 235 | E-mail: info@maxfrank.com.au

www.maxfrank.com.au



Build something great™  
with **Decorative Concrete**

Beton Pumping Group has gained a reputation as one of Victoria's principal concrete pumping entities, their team using combined experience of three decades in the industry to deliver quality services to projects across the state.

Beton Pumping Group specialise in pumping for high rise buildings up to 120 floors, as well as mobile pumping services for concrete slabs, factories, precast fabrication, civil works and large scale projects such as shopping centres and government infrastructure. Beton Pumping Groups skilled team use their vast knowledge and advanced equipment to provide high quality service every time.

Utilising concrete placing booms without cantilever weights is just one of the advantages that they hold over their competitors, and the use of self lifting placing booms save crane time and ensure greater efficiency on the job. The use of a high pressure line that has capacity for over 100 floors along with a fleet of over 20 pumps is a major drawcard for Beton Pumping Group who ensure that the best methods for their clients are used at all times.

Great care is taken with regard to environmental factors, and safe water wash systems are incorporated into everyday practice. The

only pumping company with an ISO Certification for Safety, Quality and the Environment, Beton Pumping Group is the first choice for many projects.

With a purpose built holding yard to accommodate all engineering requirements for site specific concrete pumping solutions and in house mechanical support for their equipment, Beton Pumping Group are committed to service excellence. No matter the size of the project, they stand to deliver on their services and can provide solutions to any unexpected challenges that may arise.

Currently working with building industry heavyweights such as Probuild, Leightons and Hutchinson, Beton Pumping Group are ready to offer their exceptional service for all manner of concrete pumping jobs.

For more information contact Beton Pumping Group, 1 Adam Court, Sunshine West VIC 3020, phone 03 9311 7575, email info@betonpumping.com.au, website www.betonpumping.com.au



The strength of Boral concrete with the beauty of natural stone, freedom through colours & natural textures exposed.

Discover more:  
[www.boral.com.au/DecorativeConcrete](http://www.boral.com.au/DecorativeConcrete)



Boral is a registered trademark of Boral Limited or one of its subsidiaries. BCC13898 Nov15





Established in 2009, Pro Concrete Pumping specialises in concrete pumping for a myriad of projects across Queensland. Integrating over 18 years of concrete pumping experience, they offer solutions to both the mobile and high rise market. Pro Concrete Pumping uses its vast skills on Government works, shopping centres, roads and bridges as well as performing specialised works in the mines and long distance concrete pumping.

Whilst Pro Concrete Pumping covers the Queensland market, they enjoy a strong affiliation with subsidiary company Hunter Valley Concrete Pumping Service, recognised as the largest concrete pumping company in the Hunter Valley region of NSW. With 34 staff at Pro Concrete Pumping and 36 operating out of Hunter Valley Concrete Pumping Service, these family operated companies strive to be the pumping contractor of choice in their respected regions.

Pro Concrete Pumping utilises a range of technologically advanced equipment that is both durable and reliable, giving them a clear advantage over their competitors. With a substantial fleet of 16 mobile concrete pumps, 8 trailer pumps and 15 placing booms, Pro Concrete Pumping has the solution for all jobs big or small. To ensure all equipment operates at an optimum level, highly trained fitters are employed to maintain their fleet, and old equipment is constantly replaced with new state of the art equipment to ensure a reliable service is offered.

Pro Concrete Pumping operates under strict Work Health and Safety procedures whilst still ensuring maximum productivity on jobs is maintained. Safety is a top priority and clients and employees are provided with safe working environments on all job sites with their highly skilled and experienced staff working under the guidance of a WPHS officer.

Pro Concrete Pumping's 'safe company' status can also be attributed to the type of equipment used. To ensure their high safety standards are maintained, Pro Concrete Pumping only

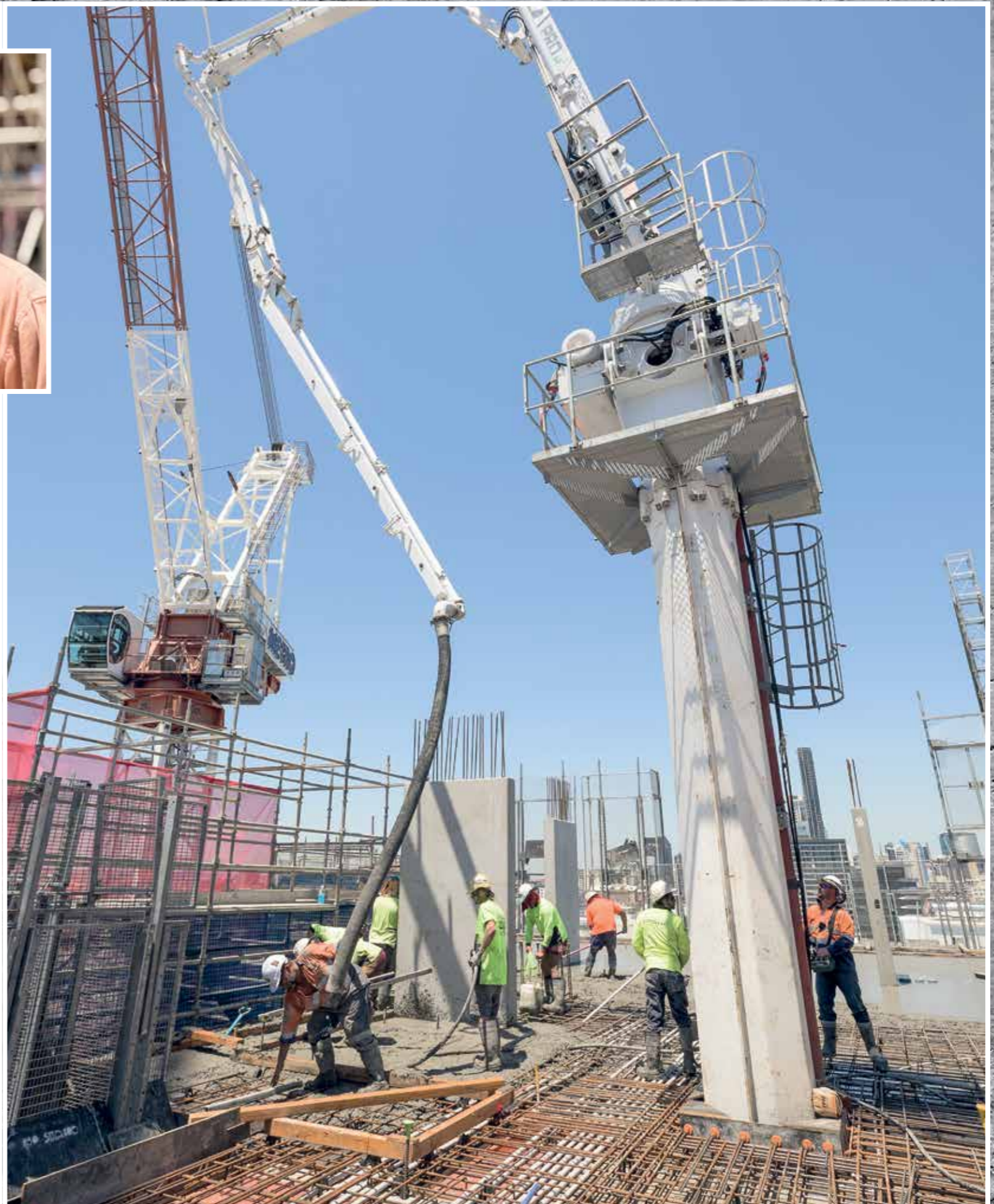
use Schwing equipment. Schwing are known internationally for their experience and up to date technology, their highly efficient and low wearing pumps ideal for long term use under severe conditions. Added to this is their reputation as industry leaders in the manufacture of premium quality concrete pumping equipment and supplies.

Excellence in customer service is another factor that Pro Concrete Pumping prides itself on. Continually expanding, the family run business makes sure it maintains personal contact with its staff and clients. All levels of the organisation are involved on a daily basis, with Company Directors working alongside experienced management staff, pump operators and administrators. The system is streamlined, and customers receive the very best service from the dedicated staff. Having developed successful corporate affiliations and boasting an impressive clientele base, Pro Concrete Pumping is continually attracting large scale major projects across the state of Queensland.

One of the major projects that Pro Concrete Pumping have worked their magic on is 300 George Street Brisbane. This \$800 million Brookfield Multiplex development is Brisbane's largest integrated CBD development, consisting of three towers catering for hotel, residential and commercial facilities. Other projects that have experienced the skill of Pro Concrete Pumping's staff are Pacific Fair Shopping Centre on the Gold Coast, and Broadway on Ann Apartments, a luxury residential tower by Hindmarsh in the heart of the Fortitude Valley. Lend Lease project 'The Yards' has also benefited from Pro Concrete Pumping's expertise with work carried out on the two residential towers that atop cafes, bars and retail on the grounds of the Royal National Agricultural and Industrial Associations Brisbane Showgrounds.

Pro Concrete Pumping's vision for the future embraces the ongoing growth of Queensland and they look forward to a continued active involvement in their State's economic success.

*For more information contact Pro Concrete Pumping, 4 Ern Harley Drive, Burleigh Heads QLD 4220, phone 07 5593 7860, fax 07 5593 5786, email [info@proconcretepumping.com.au](mailto:info@proconcretepumping.com.au), website [www.proconcretepumping.com.au](http://www.proconcretepumping.com.au)*





Established in 2006, Summit Concrete Pumping Pty Ltd is at the height of their game. Specialising in placing and finishing concrete on civil, industrial and commercial projects, including slab on ground, multi storey developments, bridge decks, and rails, Summit Concrete Pumping offer professionalism and experience second to none.

With two separate divisions of the business operating, Summit Concrete Pumping offers concreters to place and finish concrete, as well as offering a concrete pumping service. The majority of their team of 15 having been in the industry for over 25 years.

Working on projects across Victoria, Summit Concrete Pumping can utilise their concrete pumps to get the job done more efficiently, saving valuable time and cost. This clear advantage over their competitors makes them a company of choice within the industry. Their fleet of concrete boom pumps include 34m, 37m, 46m, and 55m, in addition to a line pump available for hire.

Having a good work ethic and working to a very high standard, Summit Concrete Pumping is currently working on a major Victorian State Government project. Working in conjunction with John Holland

Group in Melbourne, they are removing level crossings and building bridges in their place to help ease congestion on the roads.

In addition to this, they are working with Cut and Fill Civil Engineering contractors to pour bridge decks on the Princes Highway in Werribee, and are working in conjunction with Civilex Victoria, Buildcept, MPA Constructions, Hansen Yuncken and Summit Formwork on various developments in and around Melbourne.

Whether it's working on apartments, bridge decks or retail developments, railway projects or schools, Summit Concrete Pumping are building solid foundations for future generations to enjoy.

*For more information contact Summit Concrete Pumping Pty Ltd, 47/266 Osborne Avenue, Clayton South VIC 3169, phone 03 9551 1411, fax 03 9558 2639, email office@summitconcrete.com.au, website www.summitconcrete.com.au*

Ausreo is Australia's leading independent manufacturer and supplier of concrete reinforcing products to the building and construction industry.

The Ausreo expansion in New South Wales, Victoria and Queensland has delivered an enviable footprint boasting manufacturing facilities in all capital cities along the east coast with seven facilities in NSW, five facilities in VIC and one facility in QLD. It has been a rapid growth for Ausreo on the back of a professional, reliable and experienced team delivering confidence and value adding solutions to customer projects.

The Ausreo 'Can Do' approach has contributed to their state of the art prefabrication facility in Wetherill Park NSW which works parallel with their manufacturing and production team. Ausreo prefabrication delivers accurate and economical reinforcing elements as well as providing a programme saving through the benefits of off site production.

In addition, prefabrication in a controlled factory environment improves WH&S outcomes and ensures that construction is not delayed from inclement weather conditions. Engineers certified lifting details can also be included as part of the prefabrication service.

To date, Ausreo has supplied a number of key infrastructure projects including the Brisbane Airport Link (one of the largest infrastructure projects ever undertaken), Sydney Opera House Upgrade and other major arterial roads in Sydney.

Ausreo's professional schedulers with engineering experience and utilising 3D modelling systems can identify opportunities pre-construction to provide prefabrication solutions. This ensures that critical paths are met and can result in early completion of the structure providing significant cost savings for the constructor.

With the declining availability of steel fixing trades you can be assured that partnering with Ausreo in different reinforcing solutions including prefabrication will ensure delivery of your project on time and within budget. Early involvement with Ausreo maximises the value of our expertise and ensures that you can 'Build With Confidence.'

*For more information contact Ausreo Pty Ltd, 133-139 Newton Road, Wetherill Park NSW 2164, phone 02 9765 2100, fax 02 9765 2177, website www.ausreo.com.au*



Since its establishment in 1984, Aus Pits has grown to become the largest pit manufacturing company in Australia. Commencing as an earthmoving and contracting company, they have evolved to specialise in custom precast pits for the construction industry.

Employing over 120 people nationally, Aus Pits core products include storm water, electrical and communication pits. A leader in innovation, they have a patent concrete mix design that allows them to reduce the reinforcement of the pits, reducing the impact on the environment and increasing productivity.

The versatility of their moulding system allows Aus Pits to custom manufacture pits to suit on site requirements, and the installation of the precast pits means contractors can complete the job faster.

Working with their clients to produce the best possible solutions, Aus Pits has a 'Solve, Develop, Deliver' motto, that they proudly stand by. They work hard to develop products, strategies and methods that bring about the best outcome for their clients.

Pouring over 100m<sup>3</sup> per day in pit manufacture, in the past year Aus Pits has delivered around 20,000 pits into the civil industry. This also demonstrates their strong association with major infrastructure projects across the country

that focus on road, rail, port, airport and water infrastructure. With their head office in VIC, Aus Pits have major manufacturing facilities in Pennith and below the QLD border in Murwillumbah. Their services heavily stretch across NSW, VIC, ACT and QLD markets, as well as having successfully delivered significant major projects in SA and have supplied to projects on both Christmas Island and Papua New Guinea, demonstrating the companies strong presence throughout surrounding regions.

Having completed a lot of redevelopment work in ports, Aus Pits has developed innovative products such as the Aus Pits Fast Trench. This system is suited to 900kN loads which are the highest capacity loads to Australian Standards. The Fast Trench system ensures run off and capture of water is effective and ensures a safer surface level for the container forklifts that are loading and unloading ships.

Aus Pits stand by their motto 'service is our business', working closely with their customers and exploring new technologies that will assist their clients moving into the future.

For more information contact Aus Pits Pty Ltd, PO Box 9168, St Albans Park VIC 3219, phone 1300 408 883, fax 03 5222 1914, email info@auspits.com.au, website www.auspits.com.au

Wagners has cemented itself as one of Australia's leading concrete innovators. The family-owned business started 25 years ago and has paved its way as a market leader in concrete production, construction materials supply and logistic services with health, safety, environmental and quality the forefront management objectives. With more than 500 staff working throughout Australia and overseas, Wagners' core capabilities include ready mix concrete, cement, quarries, transport, precast, steel reinforcing and its award-winning Earth Friendly Concrete (EFC) and Composite Fibre Technology (CFT) businesses.

Currently on a major LNG Project, Wagners has two onsite 120m<sup>3</sup>/hr wet mix batch plants which have so far produced more than 300,000m<sup>3</sup> of concrete. Additionally, Wagners has produced more than 2.2 million tonnes of various high specification concrete aggregates and quarry materials as well as reinforcing steel supply to support this project.

To further support the Australian and Global mining and industrial sectors, Wagners provide computerised mobile concrete batch plants and mobile crushing solutions. In addition to traditional concrete manufacturing, Wagners has developed a cutting-edge pre-mix Earth Friendly Concrete (EFC) product. Containing no Portland cement, EFC is the world's lowest

carbon, cement-free geopolymer concrete. More than 50,000m<sup>3</sup> of EFC was used to build Wagners' Brisbane West Wellcamp Airport.

Wagners' complete supply chain solution includes Queensland's only independent cement grinding plant at Pinkenba - a manufacturing and despatch outlet for bulk and bagged cement, fly ash and lime. Wagners' assets also include one of the highest capacity precast suppliers in Queensland, manufacturing to a wide range of design specifications including TMR, RMS and tunnelling specifications. Products include girders, beams and piles as well as precast concrete columns, stairs, wall and floor panels.

More recently Wagners Precast manufactured the precast TBM tunnel segments and precast tunnel floor units for two coal mine drifts in QLD's Bowen Basin totalling 64,680 tonnes of pre-cast. Prior to this project, Wagners Precast manufactured the precast tunnel segments for a tunnel in Brisbane totalling 324,000 tonnes. Wagners continues to supply innovative, effective and economic solutions for its clients.

For more information contact Wagners, 339 Anzac Avenue, Toowoomba QLD 4350, phone 07 4637 7777, website www.wagners.com.au



Euro Precast will celebrate a major milestone in January 2016 with the opening of a new Queensland facility offering the Queensland market the same exceptional service the company will continue to provide from its Victorian-based headquarters. Experts in the manufacture, delivery and erection of precast concrete elements, Euro Precast remains at the forefront of the ever-expanding precast concrete industry.

For efficiency and ease of construction, the precast method has the edge over the more traditional site casting of concrete. A high performance construction material, precast concrete offers significant advantages across a number of critical areas including quality, flexibility of design, construction, strength, safety and sustainability. Renowned for its versatility, precast concrete products can be produced to fulfill an extensive array of sizes, functions and finishes.

Currently, Euro Precast manufactures precast concrete panels to project specifications from a state of the art fabrication workshop in Dandenong. Working closely with their clients, Euro Precast pride themselves on developing the most efficient and cost effective solutions for designing, building and erecting the job at hand.

“Our mission is to manufacture high quality concrete precast panels by integrating first class materials and exceptional workmanship,” explains George Spiropoulos, Director of Euro Precast. “We aspire to build our reputation and successively build our relationships into partnerships.”

Euro Precast’s range of precast concrete elements includes standard concrete panels, architectural finishes such as rubber moulds, brick and featured, structural panels, façades, lift shafts and stairwells plus columns. Services include delivery, caulking, grouting, patching, welding and on site erection.

Euro Precast’s highly skilled construction professionals ensure the highest quality products are delivered on time to satisfy the individual needs of each project. Across the team of production management, skilled concreters, carpenters and steel fixers to the trained on site erection crew, Euro Precast remains focused on providing its clients with a reliable and efficient service from the initial phases of the design process right through to completion.

“Euro Precast has built its foundation upon 4 key values: honesty, reliability, quality and service,” says George. “We are proud and stand by these values right from the initial meeting through to producing and erecting the panels on all our projects. We are dedicated to our customers and can assure you the job will get done in an efficient manner with only the best quality panels.”

Founded on a managerial philosophy of mutual respect, Euro Precast takes its responsibility to its clients and employees seriously. One important aspect of the company’s operations is maintaining a safe working environment.

As a structural Engineer, George Spiropoulos founded Euro Precast in 2006 following his experience in the manufacture and erection of precast concrete on a range of projects across the



construction industry. Setting out to provide precast concrete products that fulfill clients’ visions for their projects, Euro Precast has rapidly expanded to enjoy an enviable reputation for their workmanship and quality service.

Holding a qualification in Occupational Health and Safety, the Director is well positioned to ensure all Euro Precast management and employees are committed to providing a safe workplace from the workshop to the supply of a safe product to clients. Only employing trained personnel, Euro Precast’s equipment and procedures meet the highest possible safety standards.

From single dwellings to prestige multi-level residential developments, office towers and boutique commercial developments, Euro Precast’s completed projects include the iconic headquarters of the Australian Institute of Architects, 41X, in Melbourne, the Transport Accident Commission Headquarters in Geelong, GTV9 Residential development in Richmond, the Hub Apartments in Richmond, Central South Yarra and Barwon Prison High Security Unit in Lara.



For more information contact Euro Precast,  
 VIC: 2-10 Arkwright Drive, Dandenong South VIC 3175  
 QLD: 451 Sherwood Road, Sherwood QLD 4075  
 phone 03 8787 8991, fax 03 8787 8992  
 email george@europrecast.com  
 website www.europrecast.com.au





# DURABLE CONCRETE POLISHING

## Our processes:



### INDUSTRIAL FINISH

A low-gloss finish customized for industrial floors. Primarily an indoor application targeting large areas such as warehouses and department stores where flooring functionality is of primary concern.



### COMMERCIAL FINISH

A medium-gloss finish for semi-exposed and low-exposed floors. An indoor application aimed for retail areas, shop fronts and public spaces.



### PREMIUM FINISH

A decorative, high-gloss finish for exposed floors. An indoor application for showrooms, high end real estate and areas where aesthetic properties that include flatness and reflectivity of the floor are a top priority.



HiPERFLOOR™ Polished Concrete is a complete concrete surface finishing system for commercial, residential, retail and industrial markets. The HiPERFLOOR™ system enhances the beauty, strength and abrasion resistance of the floor, creating a durable, low-maintenance solution.

HiPERFLOOR™ can radically transform a broad range of new and old constructions. With HiPERFLOOR™, Husqvarna offers first - class results from a premium brand with premium service.

For all enquiries contact Husqvarna Customer Service on 1300 487 782 or scan the code below to visit our website.



[www.husqvarnacp.com.au](http://www.husqvarnacp.com.au)

Copyright © 2015 Husqvarna AB (publ). All rights reserved. Husqvarna is a registered trademark of Husqvarna AB (publ).

Scan to visit our website.

When it comes to concrete cutting, sawing and drilling in Canberra and surrounds, Complete Cut is leading the way. Established in 2002, owner Duane Clark has built a solid reputation on his ability to carry out detailed and precise work on all manner of projects.

With six fully equipped vehicles, Complete Cut is the largest concrete cutting business in the region. Offering fast efficient service, their expert staff can deliver specialist services that include diesel sawing, electric floor sawing, hand sawing, inverted drilling, hydraulic ring sawing, hydraulic wall sawing and flush cutting.

Priding themselves on their ability to work on difficult and challenging projects, Complete Cut use the most advanced technology and their expertise in the industry to provide the deepest cutting and drilling techniques across the Canberra region.

One such piece of equipment that enables them do to this is the Dragon saw. Complete Cut is the only company in the ACT to own this specialised tool, making them a much sought after provider for this powerhouse of ring saws, with depths of 400mm achievable when used in the right hands.

The colossal 74 hp road saw is included in Complete Cut's arsenal of equipment, providing highly efficient cutting solutions to get the job done quickly. This, along with owning the biggest drill bit in Canberra, gives Complete Cut an edge over their competitors when deep and precise work is required.

Also catering for concrete expansion and joints along with grinding services, Complete Cut's array of capabilities is expansive offering professional high quality workmanship on each project.

With work completed on high profile developments such as Canberra's Metropolitan Apartments, Anzac Park West and the Sydney Hotel in Barton, Complete Cut prove time and time again that they are the forerunners in Concrete cutting services in the Nation's capital.

For more information contact Complete Cut, phone 02 6294 3495, fax 02 6294 6618, mobile 0417 485 771, email [completecut@grapevine.com.au](mailto:completecut@grapevine.com.au), website [www.completecutcanberra.com.au](http://www.completecutcanberra.com.au)



When it comes to the concrete industry, Shotcrete Australia and Lis Con have built a solid reputation for delivering quality service time after time. With over 40 years' experience in the industry, Shotcrete Australia was established primarily to offer services in the preparation and application of shotcrete, performing work on basement walls, drain linings, slope stabilisation, rail cuttings and canal linings.

Using the latest technology and machinery, Shotcrete Australia is capable of delivering a wide array of disciplines on varying size projects. With an experienced team behind them, they can contribute to tendering, design, implementation and management of projects as well as develop cost effective alternative designs. Working in conjunction with their engineers, they deliver redesigned projects with shorter timescales and reduced costs, whilst still working within strict Work Health and Safety guidelines.

To ensure that the quality of shotcrete is high, a great deal of preparation goes into the initial stages. This can include the installation of strip drains, reinforcement mesh, rock bolts, dowels, expansions and construction joints. The precise work carried out in the preparation stage enables the team at Shotcrete Australia to provide a very high end shotcrete finish.

Shotcrete Australia can offer a variety of shotcrete finishes including Gun Finish, Float Finish and Steel Trowel Finish. In addition, Shotcrete Australia's skilled team have worked on a number of piling projects that range from residential and commercial developments to large scale rail, bridge and road infrastructure. Experts in bored piers, slope stabilisation, confined spaces and low headroom spaces, Shotcrete Australia have worked on a myriad of projects across the country.

Working to strict Australian Standards AS 4678-2002 Earth Retaining Structures, Shotcrete Australia ensure that work on ground anchors is signed off by their qualified engineers. The anchoring process is a vital structural element of the shoring works and great care is taken to ensure that it's installed with absolute precision.

Established in 1998, Lis Con specialise in the construction of civil projects across Australia. With a skilled workforce of over 400, Lis Con supply highly skilled personnel for labour hire and contract work, and this has enabled them to develop strong relationships with leading

construction companies. Lis Con currently have a workforce that includes foremen, form setters, steel fixers, concreters, boilermakers, scaffolders and labourers as well as managers and supervisors, engineers, Safety Officers and First Aiders.

Due to their multi skilled workforce, Lis Con can provide contract services for work on concrete slabs, retaining walls, sewer treatment plants, road pavements, jump form, bridges and abutments, pump stations, dish drains, balanced cantilever systems and culverts.

Lis Con's aim is to work with their clients to provide outstanding service ensuring that projects finish within budget and on time. In addition, Lis Con also have a fleet of vehicles that include Hi-Abs, trucks, mini buses, utes and Four Wheel Drives, that are available to be hired or to assist on work sites.

Whether it's working under a client's quality control system or their own, Lis Con is able to work effectively and efficiently, their foremen and engineers having a high level of competency in implementing either system.

Examples of Lis Con's work can be seen across Australia, with recent projects including the Nyngan Solar Power Plant; North West Rail Link, Australia's largest public transport infrastructure project; the Ballina Bypass Emigrant Creek South Creek Project and Ichthys LNG Onshore Project in Darwin.

Shotcrete Australia and Lis Con are working towards constructing a better tomorrow, their expertise and wide range of services gaining them a solid reputation in the building and construction industry across the country.



For more information contact Shotcrete Australia, 2 Pilcher Street, South Strathfield NSW 2136, phone 1300 SHORING, email admin@shotcreteaustralia.com.au, website www.shotcreteaustralia.com.au

For more information contact Lis Con, 8-10 Pilcher St, South Strathfield, NSW 2136, phone 1300 LISCON, email admin@lis-con.com.au, website www.lis-con.com.au



In the field of on-site concrete tilt panel construction, Allcon NSW Pty Ltd sets itself apart with an unwavering focus on customer satisfaction. “The team are dedicated to the job,” explains Adam McBride of Allcon NSW. “Each site has its own project manager who will liaise with the client.”

“We have also designed our own method of production that increases productivity, to meet or exceed the expectations of the client.” Tilt-up concrete construction is widely regarded for time saving and cost effectiveness in the construction of retail centres, call centres, office buildings, warehouses and distribution centres, manufacturing facilities and other commercial/industrial structures.

Building the panels onsite eliminates transport costs, is environmentally friendly and their speedy installation outstrips traditional wall construction methods. Allcon ensures its clients receive the full advantages by offering a range of services to deliver a project from concept to completion.

“We offer a full package service from design to the finished product,” Adam says. “We can assist with all engineering purposes and offer a firm, fixed price without any variations, if required.”

Priding themselves on professional and quality service, the team from Allcon undertakes all projects with equal dedication. As Adam explains, “We will do any job, large or small, from service stations to multi-unit industrial developments.”

Allcon can also quote for a range of concrete applications including piers, ground slabs and all concrete associated works.

Established in 1998, Allcon’s fast, reliable service has seen the business expand from a self-employee to ten permanent staff and ensured the development of close working relationships in the industry, particularly with specialist industrial and commercial builder, Apex Building Systems.

Allcon’s current projects include Action Aluminium and Reece Plumbing in Carringbah, industrial units in Rouse Hill and new factories in Arndell Park and Eastern Creek.

For more information contact Allcon NSW Pty Ltd, 19 William Street, Wallacia NSW 2745, phone 02 4773 9513, email allconsw@bigpond.com, website www.allconsw.com.au

Apex Building Systems Pty Ltd deliver complete, ready-to-occupy warehouse, factory, office and commercial developments across Sydney and beyond. Experts in site-cast, tilt-up industrial construction, Apex Building Systems has the edge in providing a total design-and-construct package with its own fully-equipped, structural steel manufacturing facilities.

“One of our key strengths has always been the fact that we design and fabricate the structural steel for our buildings in-house,” explains Luke Franks, Manager of Apex Building Systems. “This results in a smooth and fault-free interface between our site-cast tilt panel concrete wall construction and the structural steel elements within the building. By controlling these aspects we ensure that timing, quality and fit are correct and there is no ‘blame game’ between third parties.”

In addition to 15 permanent staff, Apex Building Systems engage tried and trusted subcontractors who work closely with the company. The company Allcon, is Apex’s primary contractor for concrete panel casting.

Originating in 1988 as a fabricator of structural steel-framed rural and industrial buildings, Apex Building Systems has evolved into the full

design and construction of concrete tilt panel industrial developments. Commencing with the client’s vision, Apex’s services include obligation free consultation and quotation, in-house architectural design facilities plus all council and authorities applications. Fully equipped to deliver any project, Apex maintains a modern excavation equipment fleet and a modern crane-equipped transport fleet as well as its structural steel manufacturing capabilities.

Servicing greater Sydney, Apex Building Systems extends its services to other NSW areas including Newcastle, Goulburn, the Central Coast and South Coast.

Apex Building Systems is currently completing a number of industrial facilities, including Tilt Up Factories in Arndell Park, Eastern Creek and Ingleburn, the Heritage Shopping/Commercial Precinct at Southridge Street, Eastern Creek and Warehouses with Corporate Head Offices at Wurrock Circuit, Carringbah.

For more information contact Apex Building Systems Pty Ltd, 32 Walker Street, South Windsor NSW 2756, phone 02 4587 7166, fax 02 4587 7139, email sales@apexbuildingsystems.com, website www.apexbuildingsystems.com.au



## SAFE HIGH PERFORMANCE DEMOLITION WITH ADVANCED ROBOT TECHNOLOGY

### Husqvarna DXR Demolition Robots.

Our **remote-controlled demolition robots** are the very latest in demolition machines, featuring high power, low weight and functional design. They are the obvious choice for users who want manoeuvrable yet highly powerful, stable machines with long reach.

Husqvarna's DXR range is modern and easy-to-use remote control, with unrivalled user-friendliness and well-considered design. All this, combined with our experience, know-how and global presence means you are also assured of highly accessible and competent service and support.

Contact Husqvarna Construction Products Customer Service on **1300 487 782** for more information.

- HIGH PERFORMANCE DEMOLITION CAPABILITIES
- REMOTE BLUETOOTH TECHNOLOGY ALLOWS SAFE OPERATION.
- OPERATOR TRAINING PROVIDED (RTO ACCREDITED)

**HUSQVARNA CONSTRUCTION PRODUCTS**  
[www.husqvarnacp.com.au](http://www.husqvarnacp.com.au)

Copyright © 2015 Husqvarna AB (publ). All rights reserved. Husqvarna is a registered trademark of Husqvarna AB (publ).



Scan to visit our website.

Boasting Australia's only locally-produced, 100% pure colloidal silica concrete treatment systems, DuraCore Pty Ltd is the number one choice for commercial and domestic concrete repairs, moisture proofing and protection. "We have been manufacturing DuraCore for four years," explains Andrew McLeay, Director of DuraCore. "We have been involved with the product for the past 15 years, initially in installation, and in the past 10 years in distribution. We are Australian owned and operated, offer fantastic customer support and back our products 100%."

Flagship products Densi Crete and Moisture Proof are just two from DuraCore's extensive range delivering permanent waterproofing solutions for new and old concrete. Environmentally friendly, 100% colloidal silica, Densi Crete seals concrete from contamination with exceptional results in the polished concrete industry. A one-coat, spray-on application, Densi Crete cures, waterproofs, densifies and purges impurities without adversely affecting the concrete's visual appearance, physical characteristics, surface traction or bond quality. Single-part colloidal gel Moisture Proof forms a non-destructive internal moisture barrier, replacing messy and time-consuming two-part epoxy systems. Able to withstand hydrostatic pressure, Moisture Proof is odorless, user-friendly and non-toxic.

Densi Crete and Moisture Proof offer the advantages of easy application and minimal site disruption. Other trades can work in the area within one hour of installing Densi Crete without compromising the product. Similarly, Moisture Proof is trafficable within an hour of application and, in a majority of a cases, floor coverings or preparation work can be undertaken 24 hours later.

Manufactured locally in Australia, DuraCore products are available nation-wide from state-based distributors. The cost advantages of local production, ease of application and the permanent effectiveness of DuraCore products guarantee unbeatable results for clients. DuraCore products have recently been utilised on a number of projects including the Logan Hospital Expansion Project, Paronella Park in Cairns, Cbus Super Stadium and the Gold Coast Aquatic Centre, a future Gold Coast 2018 Commonwealth Games venue.



For more information contact DuraCore Pty Ltd, Unit 11, 80-82 Township Drive, Burleigh Heads QLD 4220, phone 1300 044 625, email [info@duracore.com.au](mailto:info@duracore.com.au), website [www.duracore.com.au](http://www.duracore.com.au)





Established in 2009, OZZ CRETE Pty Ltd has firmly established themselves as a leader in the concrete industry due to their attention to detail and the meaningful relationships they build with their clients. Based in Queensland, OZZ CRETE provides concreting services to industrial, civil and commercial developers. Specialising in domestic, industrial, civil and commercial concreting and decorative finishes, OZZ CRETE offer expert advice on all jobs, whether big or small.

From general concrete slabs to footpaths, eye catching new age form work and civil projects, OZZ CRETE has it covered. Utilising a team of 10 employees, they engage the work of contractors and labour hire agencies when the need arises. The exceptional team of dedicated tradespeople have years of experience between them and it is this wealth of knowledge that they take to every single job undertaken.

Building clients relationships is vitally important to OZZ CRETE, and they take time to ensure they understand and adopt their clients' project requirements via means of thorough consultation from project inception to completion. The result is a strong client relationship that evolves into a successful project partnership. OZZ CRETE firmly believes the quality of product and service provided is a result of these strong client connections.

Holding a Building Services Authority for concreting, steel fixing and form working, OZZ CRETE Pty Ltd is headed by Managing Director Joseph O'Brien, who personally oversees all projects undertaken. This instils a culture of collaboration and communication throughout the company and ensures their client's priorities match their own.

OZZ CRETE has not only gained a great reputation for their concrete work, but has gained respect for the labour provided on all projects, with all employees delivering a high end quality service.

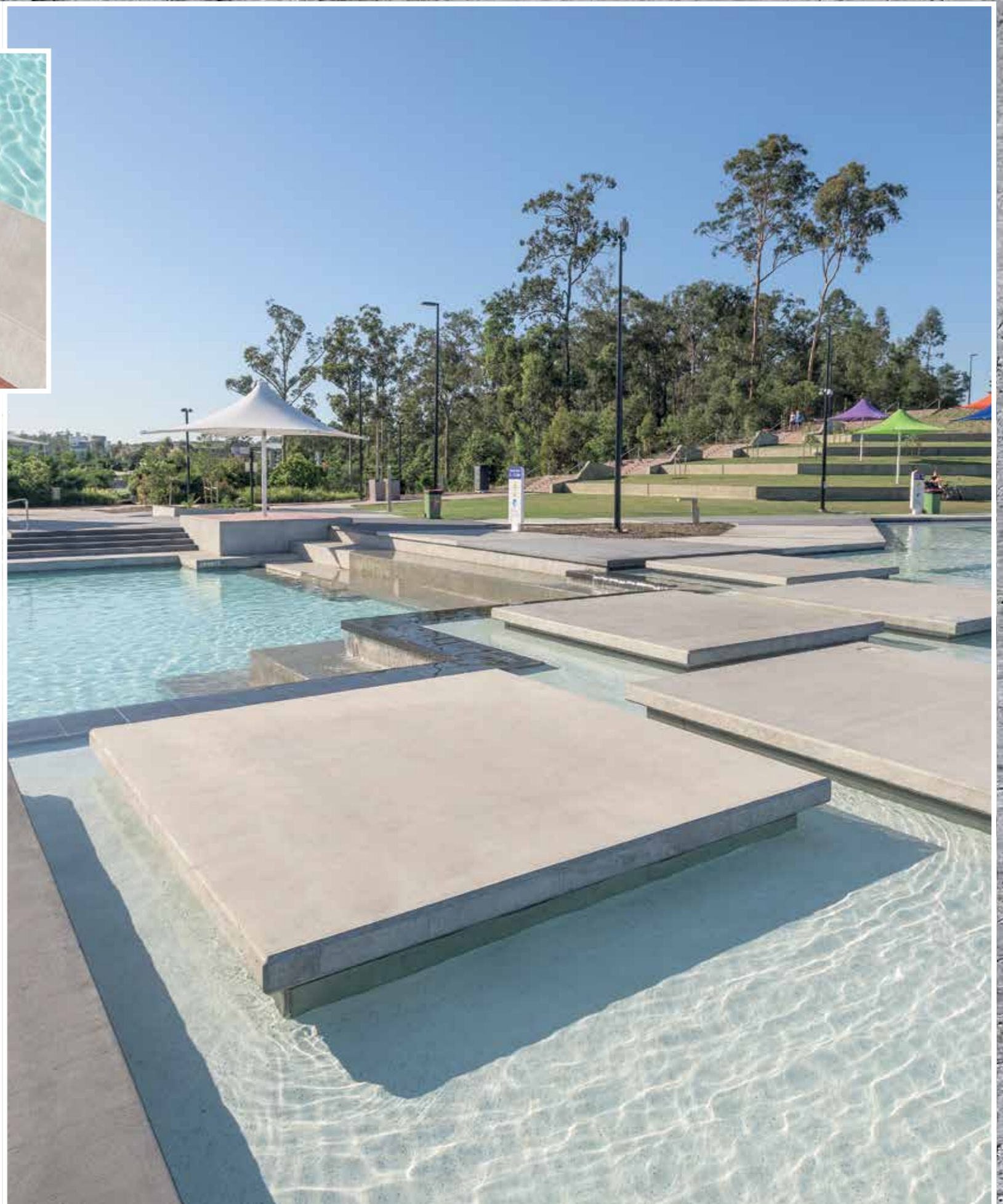
Hand in hand with their superior labour is quality workmanship, and OZZ CRETE's skill in concreting can be seen in completed projects not only across Brisbane but also in Canberra, Townsville and Darwin. Major projects completed by OZZ CRETE include the Gas Works in Brisbane City, Defence housing projects in Darwin and the North Shore Housing development in Townsville.

Another specialty of OZZ CRETE's is their ability to transform concrete into works of art, with their new age form work giving projects a unique feel. Stunning examples of OZZ CRETE's new age form work is on display in Riverheart Parklands Ipswich, and the Robelle Domain Parklands and Orion Lagoons in Springfield. From terraced water zones to zero depth pools, water cascades and exhibition gardens, the craftsmanship of this modern and intricate form work shines through. With all form work completed on site, OZZ CRETE can ensure the best possible finish to fit in with the theme of the project.

Currently working on the Beenleigh Town Centre, OZZ CRETE is creating yet another visually appealing area to fit in with Logan Councils vision for the area. A large communal area outside the Courthouse is currently being transformed, and the area will see shop frontages appear to cater for the community's needs. The concrete finish in this respect will be exposed and honed.

OZZ CRETE's work will soon be on the world stage, as they are exceptionally proud to have been awarded the concrete works for the Athletes Village for the Commonwealth Games in Southport in 2018. Work completed will include parklands, water features, access ways and pathways, seating and chairs. One thing for sure is that the athletes from both Australian and overseas will benefit and enjoy the world class facilities provided by the experts at OZZ CRETE Pty Ltd. Building solid foundations is OZZ CRETE's speciality, and one that they will continue across our wide country.

*For more information contact OZZ CRETE Pty Ltd, PO Box 1130, Park Ridge QLD 4125, phone 0422 591 721, email [joe.obrien@ozzcrete.com.au](mailto:joe.obrien@ozzcrete.com.au)*





Sydney-based Plaza Waterproofing and Services Pty Ltd builds its reputation as “not just another contractor” on solid years of experience and a “10 Point Quality Plan” that makes a unique commitment to the needs of its clients.

“The experience that I and our employees have is over 80 years worth of experience – we understand waterproofing,” explains Leslie (“Peach”) Montgomery, Director of Plaza Waterproofing. “We understand what products are used for different applications, about visiting the site and talking with the site manager, finding out what they want and picking what product would be best for their project.”

Specialising in all aspects of waterproofing in the domestic and commercial building industries, Plaza Waterproofing are the experts for concrete repair, remedial and rectification works. Services range from residential repairs and remedial work for homes, apartments/unit blocks to civil works such as retaining walls. All waterproofing needs are covered with Plaza Waterproofing the experts for all flashing work, liquid and sheet membranes, expansion joints and repairs to brickwork. Plaza Waterproofing also undertakes façade refurbishments including the cement rendering of existing brick façades, the removal and replacement of roof systems, the installation of protective

coatings including all Epoxy floor systems as well as offering a full range of industrial coatings systems.

Plaza Waterproofing operates under a “10 Point Quality Plan” that ensures its employees and contractors always deliver the best possible results for clients. Covering aspects of process, including the guaranteed completion of work within the contracted timeframe, the Plan also makes clear communication with and respect of its clients remains the company’s priority.

“We pride ourselves on our work from the first enquiry all the way through to when the job is done,” says Peach.

All Plaza Waterproofing jobs are completed by fully qualified waterproofers and comply with waterproofing AS 3740. Recent projects include Campbelltown Hospital for Donnelly Constructions, Newcastle Brewery Conversion for Trimont and Miranda Aged Care for Farindon Constructions.

*For more information contact Plaza Waterproofing & Services Pty Ltd, PO Box 379, Pyrmont NSW 2009, mobile 0406 356 734, email peach@plazawaterproofing.com.au, website www.plazawaterproofing.com.au*

Proudly Australian owned and operated, for the past 10 years Online Concrete Cutting Services has been carving a niche in the concrete cutting industry. Acquiring Concut NSW in 2012, this leader in the industry has the necessary knowledge, equipment and experience to undertake any project.

Focusing on quality and professionalism at all times, Online Concrete Cutting Services has achieved ISO9001 Quality Management Systems accreditation, NSW Government WHSMS certification and CSDA Level 1 Certifications. Their focus on safety, along with their skilled staff and extensive range of machinery, makes them sought after on jobs across Australia.

Adapting the latest technological advancements, Online Concrete Cutting Services offers the complete solution, with the specialist service of Ground Penetration Radar (GPR) Scanning available prior to sawing and drilling. Their ability to incorporate GPR Scanning into the project plan means loss of time on the job is reduced as all trades are aligned and scheduled to run to time.

Whilst offering a myriad of traditional concrete cutting services, the minimisation of noise and vibrational disturbance are of the utmost

importance to Online Concrete Cutting Services, and they are proud to have perfected silent demolition modes to get the job done effectively.

These modes include hydraulic bursting and splitting, diamond wire sawing and wall sawing, each designed to cut down on noise, yet can still be used in high traffic areas such as shopping centres, residential buildings and office blocks, with work carried out without vibration or disturbance to the general public. These methods are gaining popularity in that they can be used in a variety of scenarios with precise outcomes, creating not only less noise and vibration, but also less dust and debris.

Experts in fast, accurate and cost effective concrete cutting, Online Concrete Cutting Services ensure quality service on the job, from start to finish.

*For more information contact Online Concrete Cutting Services Pty Ltd, 6 Prince William Drive, Seven Hills NSW 2147, phone 02 9620 5555, fax 02 9620 7111, email sales@onlineconcrete.com.au, website www.onlineconcrete.com.au*





When you're passionate about your work, it shines through in your creations, and this is certainly the case for Concrete By Design. Based in Sydney, Concrete by Design are masters in their field specialising in customised furniture, benchtops, wall panels and floors, all constructed from their medium of choice, concrete.

Using their vast technical knowledge, Concrete by Design are leaving competitors in their wake with their innovative designs and supreme quality finishes. Using high tech materials such as fibreglass and polymers in their concrete mix, Concrete By Design create customised furniture such as dining chairs and tables that have a sculptural beauty and quality.

Glass Fibre Reinforced Concrete results in higher flexural and tensile strengths than normal concrete, making it suitable for numerous applications such as splash backs, vanities and lightweight façades for shopfronts.

Unique as well are the concrete benchtops and countertops, each individually crafted to suit customer requirements. Flooring solutions are also provided, with polished concrete flooring and micro trowel finishes available. The specialised micro trowel

technique is also available for use on vertical faces, creating a truly contemporary look and feel.

With experience spanning 30 years, Principal Dallas Mexon's advice is well respected, appearing regularly on 702 ABC Sydney's 'The Homies' show as well as being retained as a consultant to Home Beautiful magazine. In addition, Concrete By Design run an educational series for architects and builders for Continuing Professional Development, passionate about sharing their skills and knowledge with others in their industry.

Winners of three international awards, Concrete By Design carry out highly precise work and take on each project with dedication and enthusiasm. Whether it be working on major stadium projects or intricate work at a Penthouse complex, Concrete by Design strive to be the best at what they do.

For more information contact Concrete By Design, Sydney NSW, phone 02 4733 0199, fax 02 4733 0724, website [www.concretebydesign.com.au](http://www.concretebydesign.com.au), facebook [concretebydesign](https://www.facebook.com/concretebydesign)

When it comes to great water storage systems, you can't go past Terry Miller Concrete Tanks Pty Ltd. Building high quality concrete water tanks in NSW, VIC, QLD and SA, owner Terry Miller is passionate about using the best quality concrete and steel to produce the best possible tanks.

Established in 1983, Terry Miller Concrete Tanks specialise in heavy duty concrete water tanks, which can be used for effluent, molasses, sewerage and domestic water consumption. The high quality concrete tanks can also be found on wineries, piggeries and dairies as well as in the mining and agricultural industries.

Using a general concrete, Terry Miller Concrete Tanks adds Glenium 8100 plasticiser and Dribond crystals, pouring at 40 mpa and 80 slump, which cures to around 48 to 52 mpa after around 28 days. Using this technique, each tank is individually poured on site, creating a very strong tank that will last a lifetime.

Terry Miller believes the methods he uses to construct tanks are conducive to their effectiveness and durability. The inner formwork is supported by wooden blocks which are removed as the concrete is poured, allowing for a perfect seal between the floor and wall join.

This technique is way ahead of their competitors who use concrete blocks or bricks that remain and form a part of the tank, therefore creating a 'cold joint' and potentially creating a future leak.

We use proper tank mesh designed for concrete tanks. Y12 starter bars are tied to the tank mesh, and are bent so that they follow the wall and floor in one length, called L Bars. This, combined with the separate floor and wall meshes, bonds the wall and floor together, resulting in an extra strong tank.

The results speak for themselves, Terry Miller Concrete Tanks using their expertise to build and repair concrete tanks Australia wide for clients that include Transgrid and numerous Australian Government Departments.

For more information contact Terry Miller Concrete Tanks Pty Ltd, PO Box 372, Barnawartha VIC 3688, mobile 0419 462 814, email [info@tmct.com.au](mailto:info@tmct.com.au), website [www.terrymillerconcretetanks.com.au](http://www.terrymillerconcretetanks.com.au)