

Who says nothing happens in the Wet?
Darwin City has turned it on with visually stunning light instalations by artist Bruce Munro. These striking illuminated sculptures titled Tropical Light are dotted all over the CBD. We took Issy and had some fun getting interactive with this incredible art.

WHAT TO DO IN THE WET

PHOTOGRAPHY **MARK & TIM**
STYLING **JO MOO** HAIR & MAKEUP **BEC BROWN**
WORDS **NANNETTE HOLLIDAY**

DRINK IT IN

BRUCE MUNRO'S 'WATER-TOWERS' along the Sea Wall at the Darwin Waterfront consists of 30 towers that change colour, accompanied by the sound of the surrounding sea and wind. Representing outback water tanks, each tower is around two metres tall and made from over 200 stacked water bottles illuminated by optic fibres.

Dress from Bardot, Swarovski jewellery from Hoskings Jewellers, Casuarina Square. Kailis black diamond and pearl ring from Creative Jewellers.



A WONDERLAND AT THE WATERFRONT

THE TROPICAL LIGHT INSTALLATION 'SUN LILY' on the Peninsula Lawns at the Darwin Waterfront Precinct is a loose interpretation of the tropical spider lily flower, and Bruce Munro's successful fibre optic installations called 'Fireflies'. This sparkling display is also a nod to the sun during Darwin's Tropical Summer.

'Gumnut Flower' print dress by textile artist Lillian Smith, from Raw Cloth. Paspaley Megisti earrings and bracelet. Flowers from Little Miss Flowers.

Below: Eddie Kitching, Kinarli 'Mosquito Dreaming', 2019, acrylic on canvas. 2019 Eddie Kitching.



Located in historic Lyons Cottage in the heart of the Darwin CBD, Aboriginal Bush Traders stocks stunning handmade indigenous arts and crafts, fabrics, fashions, homewares, and jewellery.

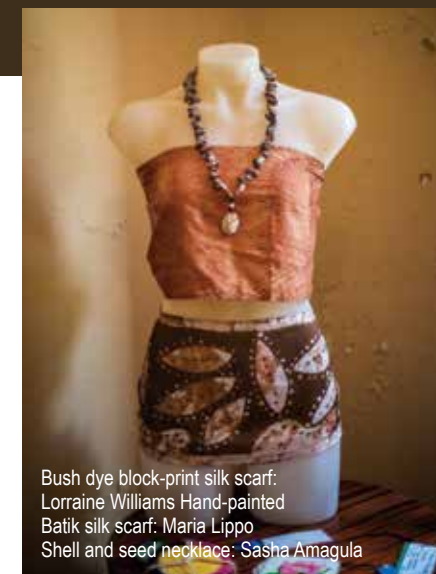


Native ingredients inspire the ABT Café Bush food menu.

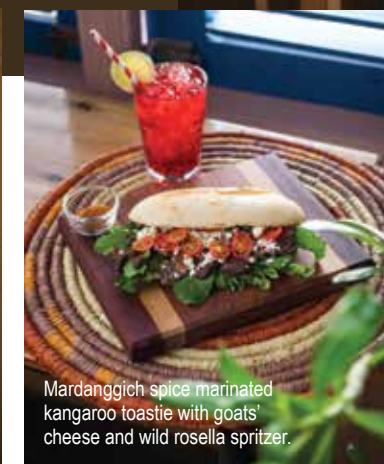


RESIDENT THINGS TO DO IN THE WET

One of Darwin's most unique attractions... is Aboriginal Bush Traders gallery, café and retail store.



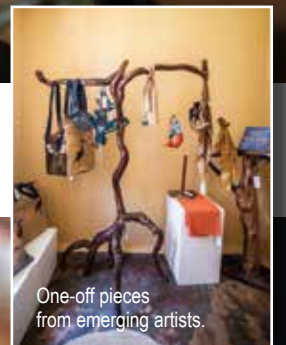
Bush dye block-print silk scarf: Lorraine Williams Hand-painted Batik silk scarf: Maria Lippo Shell and seed necklace: Sasha Amagula



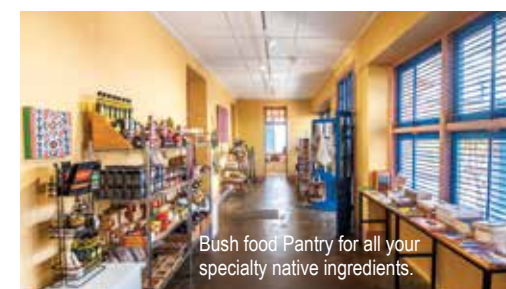
Mardanggich spice marinated kangaroo toaste with goats' cheese and wild rosella spritzer.



Kimberly Wild Gubinge Kakadu plum powder and gulbarn iced tea.



One-off pieces from emerging artists.



Bush food Pantry for all your speciality native ingredients.

There is also a range of bush foods and medicines available in the retail store. All products are authentic, ethical and support local communities. After a browse, tickle your tastebuds with breakfast, lunch or coffee at the ABT Café. Their inspired bush tucker menu with a modern twist includes cakes, teas, dampers, jams, sandwiches and salads infused with bush tomato, wattleseed, saltbush and rosella. **ABT Café, open Mon-Fri 7.30am-3pm, Sat 9am-2pm, Gallery open Mon-Fri 9am-4pm, Sat 9am-2pm, Lyons Cottage, 74 The Esplanade, Darwin. Ph: 8931 6650 info@aboriginalbushtraders.com www.aboriginalbushtraders.com**



Signature dish: Granola with Wild Peach and Kakadu plum dust.

NOURISH THE PRESENT STEEL THE FUTURE

'TIME AND AGAIN' amongst the palm tree groves at Darwin Waterfront follows Bruce Munro's interest in time and how we move through it. Constructed of 37 stainless steel lilies, it forms a convex dome. Each flower represents past, present and future timepieces. By day the installation quietly marks the time of the clouds, sky, tides, seasons, and our lives, and by night the central hub shimmers with radial bursts of light.

Dress from Bardot,
Swarovski jewellery
from Hoskings Jewellers,
Casuarina Square.



Ginger beer on tap to quench your thirst.



Warm and friendly Irish service.

RESIDENT THINGS TO DO IN THE WET

FIDDLERS GREEN

There are no strangers here, just friends who haven't met yet.

This friendship is what you'll find at award-winning, family-owned-and-operated Fiddlers Green, an old-style Irish pub at Darwin Waterfront.



Chicken caesar salad.



Beef and bacon burger.



Steak and lobster.



Beef and Guinness pie.

You'll also discover their well-priced extensive menu of rich and robust homestyle Irish cuisine, craft beers and a carefully selected wine list combined with friendly service that is second-to-none. Enjoy the atmosphere while drinking in the views of Darwin's picturesque Waterfront Precinct and revel in the warm and welcoming atmosphere provided by the friendly staff. The relaxing indoor and outdoor areas are perfect for enjoying breakfast, lunch, dinner, all-day snacks, tea, coffee, cake and homemade desserts with family and friends. The daily \$15 lunches or main meal specials from \$19.90 are some of the heartiest, healthiest and freshest you'll find in Darwin. Enjoy a Monday schnitzel, Tuesday rump steak, Wednesday oysters and curry, Thursday ribs and bibs, Friday surf and turf, Saturday pasta and Sunday roast of the day. All prepared with fresh, local produce, delicious steaks and succulent seafood. Fiddlers Green is also the perfect setting for corporate and private functions, from birthdays and receptions through to company dinners. Whatever nourishment you need, Fiddlers has the best selection of dishes to tantalise your palate. Enjoy relaxing good fare and good times every day at Fiddlers Green, Mon-Fri 9am-late, Sat-Sun 8am-late, Happy Hour daily from 4.30pm, 19 Kitchener Road, The Waterfront, Darwin. Ph: 8981 2222 fiddlersdarwin@bigpond.com www.fiddlersgreen.com.au



Experience two iconic Territory stories in one location - the 1942 Japanese bombing of Darwin Harbour and the birth and growth of the Royal Flying Doctor Service (RFDS).

Aerial view of the RFDS Tourist Facility on Stokes Hill Wharf.



1:1 replica of a Japanese Zero and the Window of 1942.



Scene from the Bombing of Darwin VR experience.

Get up close and personal inside this engaging and award-winning tourist facility on Darwin's Stokes Hill Wharf. See, touch, learn and play through technology. Enjoy two interactive story-telling, life-size holograms Reverend John Flynn shares the history of the RFDS and Rear Admiral Etheridge Grant relays his first-hand account of the Japanese attack on Darwin. Live the story yourself through two virtual reality (VR) experiences - the RFDS and the first bombing raid on Darwin by the Japanese. See and explore a decommissioned RFDS Pilatus PC1-2 aircraft and a full-size replica of the Japanese Zero. Japanese, German, French and Simplified Chinese audio headsets available. RFDS Darwin Tourist Facility, open 9.30am-5pm (last entry 4pm), 45 Stokes Hill Wharf, Darwin. Ph: 8983 5700 RFSDarwin@flyingdoctor.net www.rfstdarwin.com.au

RFDS DARWIN TOURIST FACILITY



Scene from the Bombing of Darwin VR experience.



Rear Admiral Etheridge Grant as a life-size story-telling hologram.



RFDS VR - Relive the true experience of patient Gene Hildebrand and see what it's like to fly with an RFDS Pilot.

THE HILLS ARE ALIVE WITH THE SOUNDS OF (LOTS OF) BIRDS



'GATHERING OF THE CLANS'

Bruce has never forgotten the cacophony of birds that woke him each morning in Australia, sitting on the clothes line looking like clothes pegs. Now the washing shines with excitement surrounded by his 'Gathering of the Clans' display at Civic Park. This Tropical Light installation pays homage to not only Australia's Hill's Hoist but also Australia's various native birds including the noisy cockatoos and galahs via an array of colour coded ultraviolet plastic clothes pegs.

Top and shorts from Bardot, earrings from Collette by Collette Hayman. Swarovski bracelets from Hoskings Jewellers, Casuarina Square.

RESIDENT THINGS TO DO IN THE WET

SOMETHING FOR EVERYONE IN DARWIN AND SURROUNDS



With so much to do around Darwin it's easy to miss out on many wonderful experiences. So why not let a local help plan your perfect trip?

Enjoy the glorious Darwin sunsets.



Cool off at Buley Rockhole, Litchfield.



Experience the WW2 Tunnels.



The fleet of tour buses.



See the Jumping Crocs.



A day tour to Litchfield can connect you to a scenic chopper flight.



The unique termite mounds at Litchfield must be seen.

Since beginning as the Tour Tub in 1991, this Territory family owned and operated business has expanded to include Wallaroo and Darwin Tours, ensuring your every need is catered for. The Tour Tub was Darwin's original hop-on hop-off bus. The small, iconic open-air buses were fantastic fun. 'But times change. We now offer a comprehensive half-day Darwin City Explorer Tour, using our air-conditioned coasters or the open-air buses in the idyllic dry season,' owner Karen Marchant says. 'We also offer Battle of Australia, Litchfield Park and Darwin Walking Tours. Plus a range of private and personalised options. We have a deluxe four-wheel drive and 13-seat minibus as well as our unique open-air buses and air-conditioned coasters. We even cater for large groups on 50-seater coaches.' The half-day Darwin City Explorer visits all the key landmarks and includes all entrance fees, plus hotel pick-up and drop-off. Experienced local guides provide live commentary on Darwin's unique history and can answer any questions about Darwin and the Top End. Wallaroo Tours offers the full-day Litchfield Park Tour, which begins with a private hour-long jumping crocodile adventure, before guests go on to enjoy the nature and swimming spots of Litchfield National Park. It concludes with prawns and bubbles at an East Point sunset. The half-day private Adelaide River Crocodile Tour can be extended for groups of 20 or less to include lunch at the iconic Humpty Doo Pub and a visit to Fogg Dam Conservation Reserve. 'Our friendly local staff at Darwin Tours can arrange full-day adventures or personalised and customised tours for two or more. Even your complete holiday package,' Karen says. Australia's Top End is one of the world's most stunning natural wonders. Whether you want history, adventure, budget, luxury, sunset sailing, waterfalls, crocodiles, barramundi fishing, land or helicopter tours, or just something to do around Darwin, it's all available here. Don't miss a thing. Call the friendly team today. Ph: 8985 6322 info@darwintours.com.au www.darwintours.com.au



FLEET INCLUDES OPEN-AIR AND AIR-CONDITIONED BUSES AND LUXURY 4WD



TOUR TUB

- City Sights Tour
- WWII Tours
- Private Charters
- Progressive Dinners
- Transfers
- Territory Owned
- Professional Guides
- Great Commentary

Bookings and enquiries: 8985 6322 | tourtub@bigpond.com



- Litchfield National Park
- Waterfalls
- Private Jumping Croc Cruise
- Small Group
- Experienced Guides
- Comprehensive Tour Including Sunset
- Family Operated



E: info@wallarootours.com | www.wallarootours.com

Call or book today 8981 6670



TAKE THE HARD WORK OUT OF ORGANISING TOURS OF DARWIN

- Conference Groups
- Fishing & Adventure Packages
- Wedding Packages
- Tours for Visitors, Friends & Relatives

To book or enquire call our friendly staff 8981 0227 | www.darwintours.com.au | info@darwintours.com.au



'Green Flash' at the Old Town Hall Ruins.



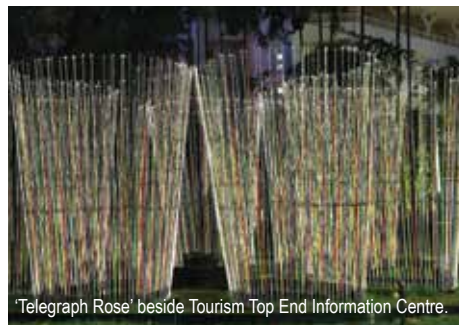
'Time and Again' at Darwin Waterfront.

WHAT TO DO IN DARWIN'S TROPICAL SUMMER

Darwin's thunderous storm clouds, exciting electrical light shows and brilliant multi-hued sunsets sparkle and shine even more this tropical summer with the installation of world-renowned British artist Bruce Munro's Tropical Light exhibition.



Walk Darwin.



'Telegraph Rose' beside Tourism Top End Information Centre.



Darwin Explorer.



Crocosaurus Cove.

Celebrated for his Field of Light installation at Uluru, this is Munro's first city-wide exhibition anywhere in the world. The two-and-a-half-kilometre outdoor exhibition features eight spectacular illuminated sculptures located around Darwin's CBD and the Darwin Waterfront. Tropical Light reflects the artist's personal history of visiting Australia and the Northern Territory. 'Several local businesses have crafted unique Tropical Light adventures for the occasion, creating multi-sensory experiences,' Tourism Top End Marketing Manager Chantelle Scott says. 'Start your Tropical Light journey on the water with mother nature's best free light show, our tropical sunset with Sea Darwin or Darwin Airboat Tours. Explore the exhibition on foot with local guides Walk Darwin on a two-hour walking tour that includes a talk with a local artist. See the lights from a different perspective from the upper deck of Darwin Explorer's double-decker bus. Then tempt your tastebuds at Wharf One with a Waterfront Food Trail, Tropical Light Signature Feast or Territory Grazing Board of seasonal Territory produce. Crocosaurus Cove has entertainment under lights each night running alongside The Burning Circus, and other businesses are adding experiences all the time.' There is also a variety of accommodation packages available on the Tourism Top End website. Munro's stunning exhibition along the Darwin Waterfront seawall consists of a series of water tower sculptures. Each is constructed out of stacked recyclable water bottles and illuminated by optical fibre. They are like enormous liquid batteries of light paying homage to the humble water tower found in every outback town in the Territory. Whilst free to view via a self-guided path which connects the Tropical Light illuminated sculptures, get in touch for a VIP viewing. Each piece intended to inspire interest during the day and hold special significance when illuminated nightly from 7pm. The exhibition runs until 30 April, 2020. To find out more visit www.tourismtopend.com.au/bruce-munro-tropical-light or contact Tourism Top End Visitor Information Centre, 6 Bennett Street, Darwin. Ph: 8980 6000 or 1300 138 886 info@tourismtopend.com.au www.tourismtopend.com.au



Darwin Airboat Tours.

Sea Darwin.



BRUCE MUNRO: TROPICAL LIGHT

1 NOVEMBER 2019 - 30 APRIL 2020

'Bruce Munro: Tropical Light' is an outdoor exhibition featuring eight illuminated sculptures across Darwin's CBD by world renowned artist Bruce Munro.



TO BOOK YOUR TROPICAL LIGHT THEMED EXPERIENCE, VISIT

www.tourismtopend.com.au

Tropical Light is an initiative of the NT Government

TALK TO A LOCAL!

Our friendly and knowledgeable local experts can provide up to date information on the Top End and Bruce Munro: Tropical Light, as well as book all your accommodation, tours, attractions and vehicle hire with unlimited kilometres.

Visitor Information Centre: 6 Bennett Street, Darwin City
info@tourismtopend.com.au Web: tourismtopend.com.au

#TourismTopEnd



1300 138 886



INCLUSIVE, ACCESSIBLE TOURISM



An artist impression for access for Sunset Markets at Mindil Beach.

What is accessible tourism?

It is ensuring tourist destinations, products and services are accessible to everyone, regardless of their physical limitations, disabilities or age. People with access requirements include those with children in prams, seniors with mobility issues and people with permanent or temporary disabilities. Accessible tourism encompasses publicly and privately-owned tourist locations.



Some travellers with a disability face barriers in accessing infrastructure, services and products, hindering their participation in social and economic activities.



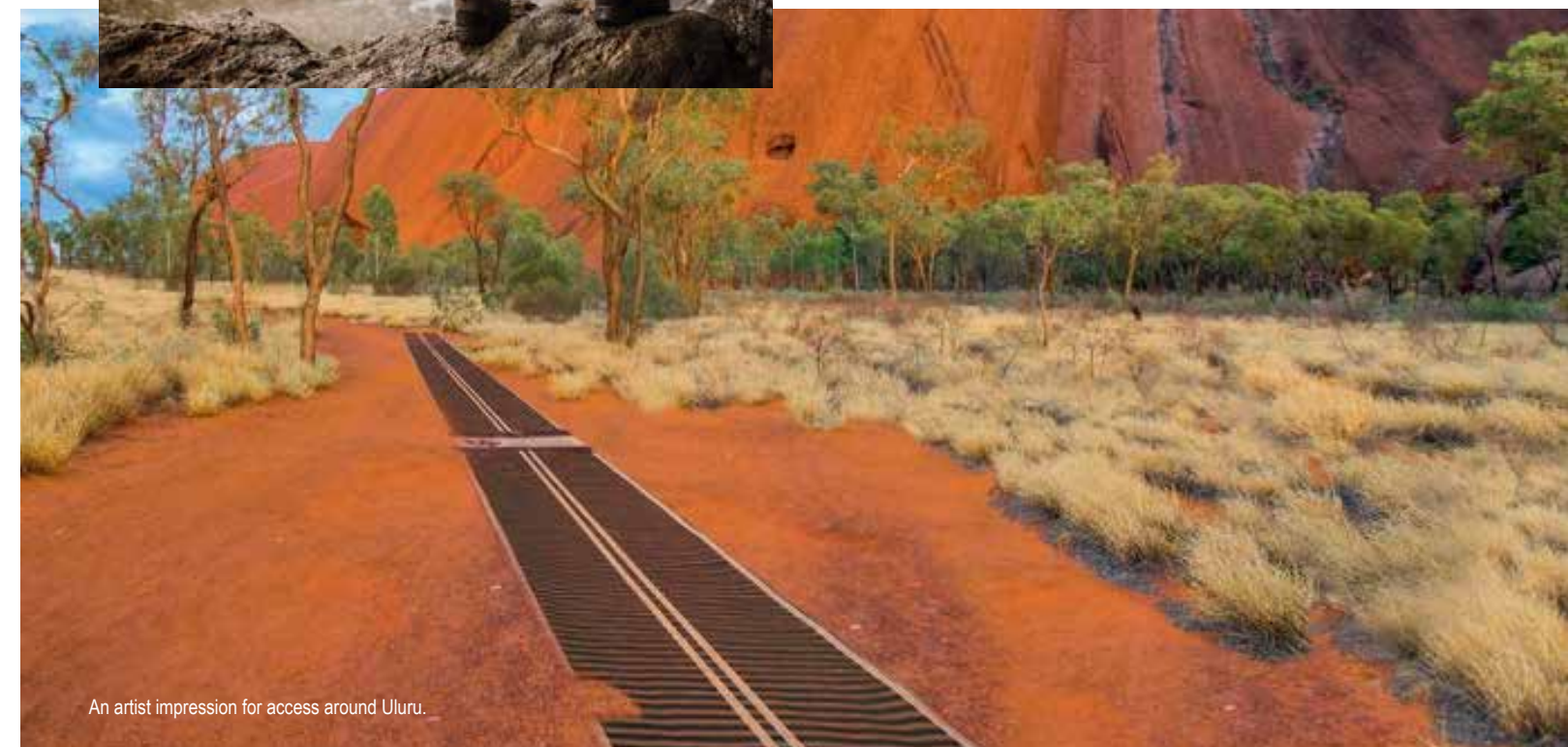
An artist impression for access to the Recreation Lagoon at Darwin Waterfront Precinct.

'One billion people, or 15 per cent of the world's population, have disabilities. Almost half are Asian—a key target market for Australian tourism operators. Around 4.5 million are Australian—almost 20 per cent of our population,' National Disability Service Northern Territory (NDS NT) Manager Susan Burns says. 'Some travellers with a disability face barriers in accessing infrastructure, services and products, hindering their participation in social and economic activities. Older people and young families often encounter similar issues, like needing ramps or large-font pamphlets and menus. Addressing these barriers has a flow-on effect. Inclusive and accessible tourism is a concept that refers to tourism services and products where people of all abilities feel welcome and wanted as customers and guests.' There is a sizeable, growing and diverse range of travellers with accessible needs. A recent report aimed at enabling regional tourism businesses and local governments highlighted improvements for disability information and marketing. It revealed a growing demand for accessible tourism and recreational services, while also highlighting the economic benefits. 'On average, people with a disability spent more on day trips than people without a disability,' Susan says. 'Expenditure was \$2.9 billion for older people and \$2.7

billion for young families. This doesn't include the multiplier effect, as people with a disability travel on average with two or more other people. The contribution of accessible tourism to Australia's visitor economy is \$10.8 billion. This is more significant than the inbound Chinese spend of \$10.4 billion. An NT Inclusive Disability Tourism Strategy would help improve access to mainstream services. A range of actions within the Strategy would help ensure more people with disability can enjoy holiday travel.' A great step towards accessible tourism would be making Mindil beach accessible. Some collaborative discussions have begun about the possibility of making this happen". But more is needed. 'There are many opportunities for NT businesses to make their business more accessible and inclusive,' Susan says. 'At NDS NT we are ready to connect tourist operators with information around obligations and opportunities concerning accessibility. We want to increase their knowledge about the market for inclusive tourism, and develop strategies to improve the accessibility of their business so they appeal to a wider range of visitors of all abilities and ages.'

For further information contact NDS NT, Ground Floor, 1 Dashwood Place, Darwin Ph: 8930 2824 ndsnt@nds.org.au www.nds.org.au

The contribution of accessible tourism to Australia's visitor economy is \$10.8 billion. An NT Inclusive Disability Tourism Strategy would help improve access to mainstream services. A range of actions within the Strategy would help ensure more people with disability can enjoy holiday travel.



An artist impression for access around Uluru.