

# AN IMPRESSIVE OPERATION

The \$195M Stage C of the Lyell McEwin Hospital is the final stage of the \$350M redevelopment. The completed hospital which will now provide Northern Adelaide with state-of-the-art medical resources and technologies.

CLIENT : SA Health  
MAIN CONSTRUCTION COMPANY : Hansen Yuncken  
PROJECT MANAGERS : DPTI  
ARCHITECTS : Principal - Cheesman Architects,  
Support - Silver Thomas Hanley  
STRUCTURAL CIVIL ENGINEERS : Wallbridge & Gilbert  
SERVICES ENGINEERS : Bestec  
COST MANAGER : Rider Levett Bucknell  
PROJECT VALUE : \$195 Million



Opening as a small country hospital in 1959, today the Lyell McEwin Hospital (LMH) is the premier hospital of Northern Adelaide and is recognised as a leading teaching institution for health care professionals. Since 2002, a \$350 million three stage redevelopment has been occurring to meet the needs of the growing northern suburbs and surrounding areas by masterful construction managers Hansen Yuncken.

As one of Australia's leading construction companies, Hansen Yuncken are at the forefront of change and innovation in the building industry. Founded by Lauritz Hansen and Otto Yuncken in Victoria 1918, the company has been in operation since. They have retained the tradition of quality and business integrity, although the faces and methods have changed over the years. As a company, Hansen Yuncken's lean, local ownership structure gives us the edge in flexibility and responsiveness to changing requirements, whether client, market or technology driven. "Our values define us: what we offer, what makes us special, it's the way we do business."

Hansen Yuncken has over 650 staff Australia-wide. Since 2010, the company have been developing an in-house collaboration and information management platform, called HYway. Developed using Microsoft SharePoint the system integrates the disparate systems to provide intelligent reporting at all levels. Integrating with geographical and spatial environments allows Hansen Yuncken, their business partners and clients to better understand projects in an enhanced visual representation. The use of electronic workflows in place of paper forms and future integration with Building Information Modelling (BIM) provides efficiencies in all aspects of their business.

With the implementation of their award winning platform HYway, Hansen Yuncken usher in a revolutionary new era in project management and effective communication. The Lyell McEwin Hospital is one of the projects benefiting from BIM and HYway. The adoption of the latest technologies has enabled the design and construction team to work smarter, faster and more efficiently, improving co-operation across the whole supply chain and providing a more engaged environment.

Hansen Yuncken's expertise is acknowledged in all sectors of the building and construction

industry. They've completed over 4500 projects during their 98 years and the LMH is one of their significant landmark projects. All three stages have won Industry Awards.

Hansen Yuncken has been working on the LMH Redevelopment project continuously since 2002. Stages A and B included substantial renewal of ageing infrastructure, including new inpatient, Intensive care, Womens Health, birthing and Neo Natal facilities, 9 theatres, 50 bed older persons and adult mental health care unit, Linear Accelerator and general ambulatory, IMVS support facilities, a multi-deck carpark for 1350 vehicles and the renewal of major central plant/services reticulation.

Stage C now includes a 5 Star Green Star rated 96 bed acute inpatient building, plus a helipad on the upper level; a ambulatory care building to accommodate outpatient and allied health functions; a new support services building to accommodate the Women's Health centre including 22 bed Paediatrics, maternal assessment unit, administration, research, education, clinical offices, additional Linear Accelerator and expanded Oncology and Chemotherapy facility, additional theatres, medical wards, doubling of the Intensive care unit capacity and Neo Natal, bulk decontamination disaster unit relocated and back of house engineering and catering services; and a range of internal reconfigurations, relocations, refurbishments and upgrade works to suit existing and expanded functional requirements and completion of the first Australian major brownfield city hospital redevelopment with a 48 hour post disaster, island mode, 100% sustainable operational capability.

The hospital's future service is anticipated to include enhancements to the volume and complexity of interventional cardiology, urology, ophthalmology, orthopaedics, cancer services, neurology and general medicine.

Hansen Yuncken operates from capital cities and regional locations in Australia. They offer a combination of the resources of a national tier 1 contracting organisation but with the dedication and focus of a small project team, providing a single point of call for a wide range of property related services.

**For more information contact Hansen Yuncken Pty Ltd**, Level 1, 191 Fullarton Road, Dulwich SA 5065, phone 08 8229 7300, fax 08 8229 7301, email [adelaide@hansenyuncken.com.au](mailto:adelaide@hansenyuncken.com.au), website [www.hansenyuncken.com.au](http://www.hansenyuncken.com.au)

# KEEPING SOUTH AUSTRALIA COVERED

As one of South Australia's most reputable roofing and cladding companies it's only natural that Cladding & Roofing Contractors Pty Ltd were responsible for this during Stage 3 (or C) of the Lyell McEwin Hospital expansion and redevelopment in Elizabeth Vale.

"For Stage C our scope comprised of 1,000m<sup>2</sup> of Vitrapanel and over 2,500m<sup>2</sup> of Alpolic/fr Composite cladding," advised Andrew Rorison. "The colours were matched to the existing signature colour palette. Over the years, we've built a solid reputation for providing complete roofing and cladding solutions for commercial and industrial applications across all industry sectors."

The Alpolic/fr cladding used on the project is compliant with the relevant building codes due to the fire resistant properties of the product. Alpolic/fr is manufactured to the highest standards in Japan by Mitsubishi Plastics. Our supplier CSP Architectural has assisted us in successfully delivering this project to the people of South Australia.

Originally established in 1986 and now known as Cladding & Roofing, this large family-owned business today employs over 80 permanent staff. "We pride ourselves on our ability to integrate seamlessly with

clients and consultants at any stage of a project," claims Andrew. "Our in-house drafting team is equipped with the very latest in design and modeling software. While our onsite team of installers is supported by a network of experienced estimators and a dedicated production crew."

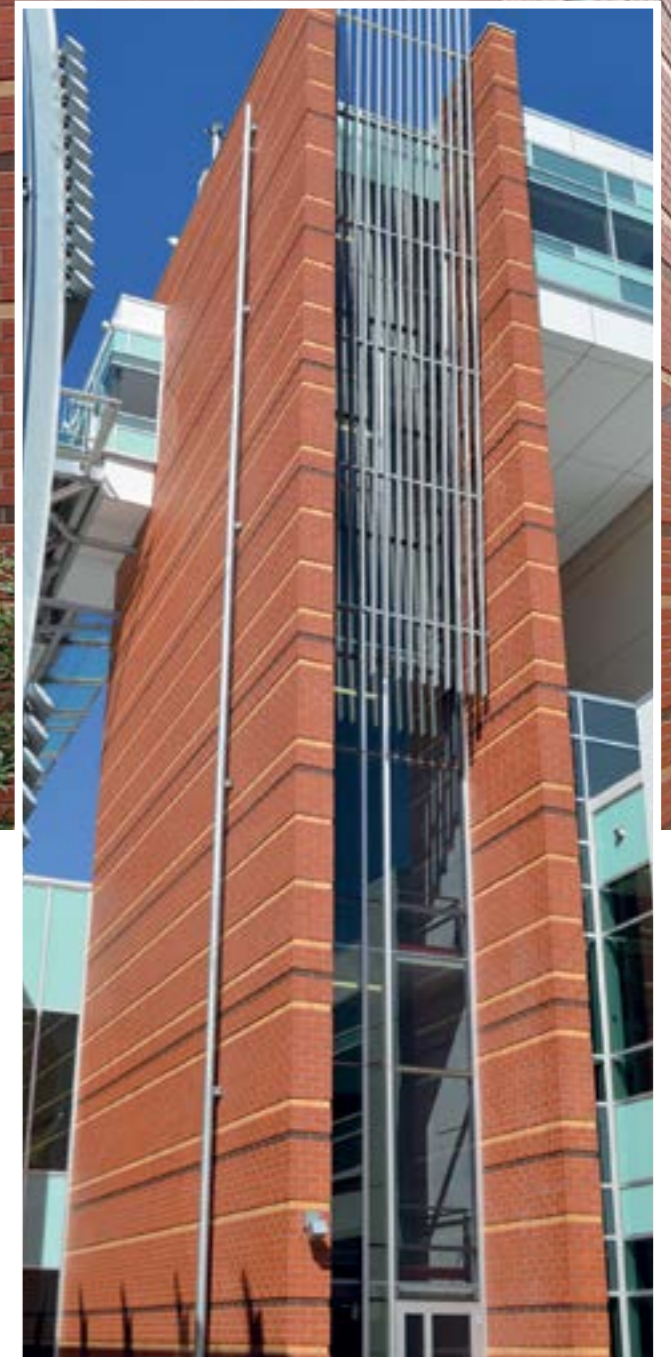
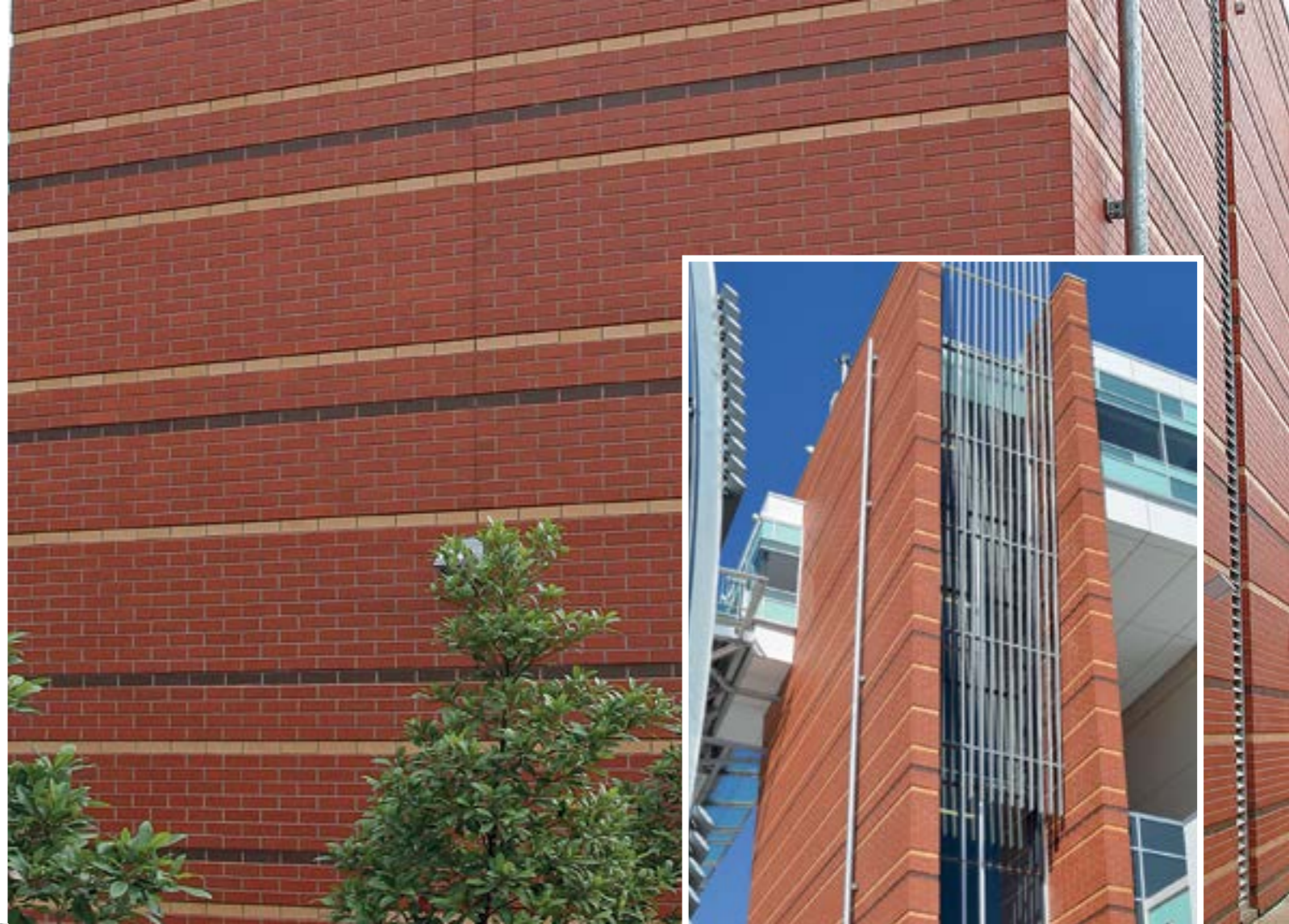
Cladding & Roofing proudly offer clients the most diverse range of façade products in South Australia, tailored to suit almost any application or budget. All their products are fabricated in-house.

"Although the installation of composite panels is still our core focus, we can offer our customers an extensive range of products," says Andrew. "We specialise in architectural façades, commercial and industrial roofing, plus roof and façade maintenance services."

Cladding & Roofing's management systems, in-house manufacturing, and substantial fleet of access and materials handling equipment place them firmly at the forefront of their industry.

"We take great pride in bringing experience, innovation, quality and reliability of workmanship to every project," Andrew beams. "We've established excellent relationships with quality building product suppliers such as CSP Architectural, small builders, property developers and large construction companies across Adelaide and South Australia."

*For more information contact Cladding and Roofing Contractors Pty Ltd, 163 William Street, Beverley SA 5009, phone 08 8347 3999, fax 08 8347 3885, email enquiries@claddingandroofing.com.au, website claddingandroofing.com.au*



## TREW QUALITY

South Australia's Lyell McEwin Hospital has been undergoing a \$350 million staged expansion and redevelopment since 2002. While the internals are modern and state-of-the-art, the 1959 classic country exterior has been faithfully maintained by multi award-winning Trew Stone Contractors.

For more than 25 years Trew Stone Contractors have been specialising in stone, brick, block, plaster and concrete render to clients nationwide. Led by Director, Mark Trewartha, his multi-skilled and professional team's quality work can be witnessed from Airlie Beach in Queensland, Ayers Rock in the Northern Territory to Ceduna on the Eyre Peninsula South Australia. "One of our most unique projects was the repair and consolidation of explosive pyramids at the Hardened Network Army project in Edinburgh (South Australia)," said Mark.

Trew Stone Contractors most visual element on the Lyell McEwin Hospital is the brick perimeter walls. "We won another Master Builders Association 'Excellence in Brickwork' award for this project," said Mark. "Working within the tight and limited space of a building site on an operational hospital was a major challenge."

The walls vary from 10-24m high. The simplicity of the standard red face brick perimeter walls are highlighted by intermittent cream and brown brick banding which are recessed to gain definition. Aesthetically the clay brick walls dominate John Rice Avenue, not only from the road but up close the walls are very neat, clean and accurate.

With other vertical structural components nearby, the precision of workmanship is apparent.

"No pressure cleaning means the red mortar joints remain red, ironed with jointing tool and not open to erosion," informed Mark. These hand installed masonry elements cannot be matched by factory panels or cladding systems, ensuring the Lyell McEwin Hospital will stand as a timeless testament to Trew Stone Contractor's commitment to producing consistent, high end masonry projects.

*For more information contact Trew Stone Contractors, 57 Ledger Road, Beverley SA 2054, phone 08 8345 2199, fax 08 8345 2166, email trewsto@bigpond.net.au, website www.trewstone.com.au*



Lyell McEwin Hospital, SA



## PRECISION PLUMBING

Jordan Plumbing is one of Australia's leading hydraulic contractors, offering a full range of plumbing services - from consultancy and design to construction of major industrial and commercial projects, programmed maintenance and emergency services.

Over their 80 year plus history, Jordan Plumbing has developed a reputation for providing innovative and efficient solutions on a broad range of projects throughout Australia. The team at Jordan Plumbing are committed to identifying and satisfying their client's needs to provide plumbing solutions in a flexible, responsive and personal manner.

Their wide ranging expertise in the plumbing industry has been established over many years of valuable experience working on a diverse mixture of large and small projects. Jordan Plumbing's construction profile includes hospitals, along with educational facilities, convention centres, apartment towers, defence works, office buildings, shopping centres and specialist facilities.

Jordan Plumbing seek out fresh approaches to traditional methodologies, embracing new technologies to better serve their client's needs. They have invested significantly into the growing world of Building Information Modelling (BIM) and are fully equipped to deliver projects utilising various 3D modelling software packages. Their in-house design and documentation team can provide plumbing solutions from design concept stage, throughout the construction period and into project handover.

In recent years, this has included their involvement in the redevelopment of Lyell McEwin Hospital in South Australia's Northern suburbs. Contracted by Hansen Yuncken, Jordan Plumbing have contributed to the construction of a new 96 bed acute inpatient building and the expansion of Women's Health centre facilities, including an additional 50 bed birthing ward, and other specialist centres.

Jordan Plumbing were commissioned to install hydraulic services associated with both existing and new buildings, along with new water treatment and softening plant, Reverse Osmosis plant, water storage tanks, and in excess of 550 point of use thermostatically controlled mixer taps.

Final construction works will be completed in 2015 and Jordan Plumbing are proud to have been an integral part of this very important asset for South Australia and the community.

**For more information contact Jordan Plumbing Pty Ltd**, 113 Regency Road, Croydon Park SA 5008, phone 08 8440 0400, fax 08 8340 1994, email [admin@rajordan.com.au](mailto:admin@rajordan.com.au), website [www.rajordan.com.au](http://www.rajordan.com.au)